



Language Studies International Prospectus 2009

OVER
40
YEARS
EXPERIENCE

Learn and live the language

UK
USA
CANADA
AUSTRALIA
NEW ZEALAND
FRANCE
GERMANY
SWITZERLAND
MALTA



www.lsi.edu



Welcome Willkommen Bienvenue Bienvenido



We have a record of over 40 years of successful language training, with many thousands of satisfied students worldwide. LSI centres provide the perfect environment for learning.

All our teachers provide a high level of care and attention to ensure you achieve your aims. These skills, combined with thorough course preparation, mean that each lesson will bring you a sense of achievement and progress.

At LSI we believe that the fastest and most effective way to learn a language is to learn it and live it in a country in which it is spoken, and we are committed to providing a total learning experience.

Whether you want to improve your language skills for professional, academic or personal reasons, LSI has the right course for you. The social programmes, quality accommodation and the support we provide during your stay will help you feel at home and ensure that you make maximum use of your time abroad. Our reputation is your guarantee.

We look forward to meeting you.

David Immanuel
LSI – Language Studies International

OUR EXPERIENCE IS YOUR SUCCESS

- LSI International Atmosphere.**
You will meet students from all over the world and share the experience of learning a foreign language.
- LSI Language Centres.** Centrally located in some of the most desirable cities in the world, LSI students have access to a wide variety of social and cultural activities.
- LSI Small Classes,** Regular Individual Counselling & Effective Course Design ensure that you make rapid progress in key communication skills.
- LSI Quality Inspected Homestays.** Contact with other students and local people makes sure that you practise these skills outside the classroom.
- LSI Teachers.** Our teachers are carefully selected and friendly, helpful and ready to listen.
- LSI Language Centres** are fully equipped with up-to-date materials and resources in comfortable surroundings.
- LSI Interactive Classroom.**
At LSI, languages are taught in a dynamic and energetic way. We believe active communication in the classroom is the most effective way of learning – by speaking you will achieve fluency.
- LSI Finds the Right Level for You.**
On the first day we establish your level and needs with a written test and an interview, and place you in the best class for your level.
- LSI Certificate.** You receive a certificate on your last day stating the course attended and the level attained, as proof of your language competence. A report is available if required.
- LSI Multimedia/Internet.**
All LSI language centres are equipped with computer rooms for use during lessons or for self-study. Programs range from intonation practice to grammar and vocabulary development.
- LSI FREE Internet Access**
for all LSI students.
- LSI Multicentre Courses**
allow you to learn and live the language in more than one LSI location.





When I arrived at LSI, I started in the Pre-Intermediate class. I have moved up three levels and I feel more confident in speaking – and my progress is not over yet!

Nicolas Poilvert, France



General Courses



LSI Standard 20 Course

- 20 Lessons per week (4 lessons per day)
- 1 lesson: 50 minutes
- 14 students max. per class
- Beginner to Advanced levels
- Course length: 1-50 weeks
- Age 16+

During the lessons you rapidly improve your communication skills in a variety of everyday situations. In 2 lessons each day you will cover the following areas: grammar, vocabulary, pronunciation. In a further 2 lessons you concentrate on: speaking, listening, reading, writing. You use a text book and a wide variety of materials and exercises including role-plays, authentic materials, newspapers and magazines.

LSI Intensive 30 Course

- 30 Lessons per week (6 lessons per day)
- 1 lesson: 50 minutes
- 14 students max. per class
- Beginner to Advanced levels
- Course length: 1-50 weeks
- Age 16+

In the mornings (lessons 1-4) students have the same programme as the LSI Standard 20 course. In the afternoons (lessons 5-6) there are a range of options to suit you. All LSI schools offer fluency practice – these classes consolidate what you learn in the morning, improving your fluency and pronunciation through discussion on a wide range of topics. There is an emphasis on language for everyday situations. Topics may include: film and theatre, media studies, current events, politics, local culture, research using the internet. Other options vary, depending on your level, the language and the LSI language centre where you are studying.

Examples are:

- Examination Skills.** You prepare for a wide range of examinations (see page 8).
- English for Academic Purposes.** You practise skills such as note taking and essay writing – essential for university.
- English for Business** (see page 10). Please see LSI language centre pages for details of courses offered.

LSI Afternoon Course

- 10 Lessons per week (2 lessons per day)
- 1 lesson: 50 minutes
- 14 students max. per class
- Intermediate to Advanced levels
- Course length: 1-50 weeks
- Conversational English/Business English/Exam Preparation
- Language centres: London Central, London Hampstead, Brighton, Cambridge, Paris, Zürich, Auckland and Christchurch.

Plus Courses

The combination of group and One-to-One learning is ideal when you want extra help with general skills or more specialised topics. Plus courses are 5 or 10 individual lessons. Our teachers work with you to develop your study plan. This course can supplement a Standard 20 or Intensive 30 Course.

Mini Group Courses

- 20, 30 or 40 lessons per week
- Participants: maximum 5
- Minimum age: 21 years
- Intermediate to Advanced levels
- Course length: 1-4 weeks
- 1 lesson: 45 minutes (in the USA 50 minutes)
- Courses begin: every Monday

If you want a personal and interactive approach you should also consider the LSI Mini group course. Mini group courses include general grammar and skills. The focus on negotiations, presentations and meetings is relevant in business and non-business situations. It is an exciting alternative to LSI Standard 20 and Intensive 30 courses for more mature learners. (see page 31)

One-to-One

The fastest way to improve your language skills is through individual lessons. Individual lessons are ideal if you prefer a very personal focus on your own aims. (see page 31)



As course details may vary depending on the school, the individual LSI Centre pages will display the details where they differ.





Your Level And What You Can Achieve

For guidance on your level and what you can achieve, please see the diagram and the levels description.

A Beginner You only know a few words and phrases.	<ul style="list-style-type: none"> • IELTS 1 • 4-6 weeks study 	
B Elementary You can communicate using very simple grammar and vocabulary.	<ul style="list-style-type: none"> • IELTS 2-3 • TOEFL iBT 0-8 • 4-6 weeks study 	
C Pre-Intermediate You take part in conversations using basic grammar and vocabulary with acceptable accuracy.	<ul style="list-style-type: none"> • IELTS 3-4 • TOEFL iBT 9-18 • TOEIC 200-250 • 8-12 weeks study 	
D Intermediate You have better control of grammar and vocabulary. Errors still frequent but good understanding of the language.	<ul style="list-style-type: none"> • IELTS 4-5 • TOEFL iBT 19-40 • TOEIC 375-500 • FCE Grade C • 8-12 weeks study 	Entry to vocational or academic preparation courses
E Upper Intermediate You use a wide range of structures with a fair degree of accuracy.	<ul style="list-style-type: none"> • IELTS 5-6.5 • TOEFL iBT 41-64 • TOEIC 560-625 • FCE Grade A&B • 8-12 weeks study 	Entry to university degree and diploma courses, internships, or paid work in your host country
F Advanced You communicate very well using most structures accurately.	<ul style="list-style-type: none"> • IELTS 6.5+ • TOEFL iBT 65+ • TOEIC 690+ • CAE • CPE • Progress varies 	Entry to postgraduate degree courses or work in your host country





LSI is a place where you can feel comfortable. I have been here for 4 months, and it has been an unforgettable experience! Great people, great place!



Carla J, Brazil



International School Year (ISY)



This could be the most exciting year of your life. Achieve a high level of fluency in a language and make new friends from all over the world.

The ISY programme offers value for money and a great choice of course options. Whatever your needs, our highly trained, friendly staff will ensure that your year is a success.

- 24/30/36/48 week programmes
- 20/24/30 lessons per week
- Minimum age 16+
- Beginner to Upper Intermediate levels

An individual study plan is designed for you to suit your level and your aims. We continue to check your progress with regular meetings to make sure you achieve your aims. Your study plan options can include: general language classes (see page 4), examination courses (see pages 8-9 and individual LSI language centre pages for examinations offered), fluency practice, study skills classes and English for business.



EXAMPLES OF YOUR ISY STUDY PLAN

30 lessons per week at LSI Vancouver for 36 weeks

Week 1-12	Week 13-24	Week 25-36
General English	FCE Exam Preparation	General English
English for Business	FCE Exam Preparation	TOEFL Preparation and Study Skills
Academic Counselling	Academic Counselling	Academic Counselling

30 lessons per week at LSI London Central for 36 weeks

Week 1-12	Week 13-24	Week 25-36
General English	IELTS Preparation and Study Skills	FCE Exam Preparation
Academic Counselling	Academic Counselling	Academic Counselling

30 lessons per week at LSI Paris for 24 weeks

Week 1-12	Week 13-24	Week 25-36
General French	General French	—
Fluency Practice	DELFL Preparation	—
Academic Counselling	Academic Counselling	—

The ISY programme is offered at all LSI language centres but please note that course options may vary between LSI centres. Some course options may only be available on the 30 lesson per week programme. We are happy to advise you as to which programme is most suitable for your needs.

Accommodation

All options are available (see page 12 and individual LSI language centre pages). However, we recommend our carefully chosen homestays to ISY students, at least for the first month of your programme - the friendly welcome you receive helps you adjust quickly into life in a new country.

Work Experience can be arranged

for ISY students (see page 11 for terms and conditions).

LSI University Pathway

is also available to all ISY students. (see page 7)



Preparation for University, College and Career



Every year many students choose LSI to prepare for university in an English speaking country. Our well structured courses and personalised study plans mean that students know their aims will be met. General English programmes help students develop their English knowledge and skills to a level they need to do well in further studies. Exam preparation classes make sure they get the language entry requirements they need for successful application to university.

LSI University Pathway

The LSI University Pathway focuses on preparing you for university. It is available to students enrolled on an LSI Intensive or ISY 30 course (UK, USA, Canada, Australia & NZ) or LSI Foundation for Business (LSI Cambridge). The course length is based upon your individual aims and ability. In addition to intensive training for IELTS or TOEFL examinations, you will receive assistance in designing a study plan to help you achieve your goals. To qualify for the University Pathway you must have successfully graduated from high school.

We offer counselling to students which includes:

- Advice on suitable foundation, undergraduate and postgraduate courses
- Advice on IELTS and TOEFL score requirements
- Arranging visits to universities
- Assistance in completing applications and preparing for interviews

The University Pathway is free to students enrolled on LSI courses for a minimum of 12 weeks. However, individual university application fees may apply.

LSI students have been placed in universities such as:

- University of Warwick (UK)
- University of Manchester (UK)
- University of Nottingham (UK)
- University of Bath (UK)
- London School of Economics (UK)
- Imperial College London (UK)
- Notre Dame de Nemour University (USA)
- San Francisco State University (USA)
- Golden Gate University (USA)
- Metropolitan College of New York (USA)
- California School of International Management (USA)
- College of the Desert (USA)
- Newbury College (USA)
- Bunker Hill Community College (USA)
- Cambridge College (USA)
- Suffolk University (USA)
- Seattle Central Community College (USA)
- Niagra College (Canada)
- Brock University (Canada)
- George Grown University (Canada)
- Canadian Tourism College (Canada)
- Kwantlen University College (Canada)
- Malaspina University College (Canada)
- The Art Institute of Vancouver (Canada)
- Central Queensland University (Australia)
- Griffith University (Australia)
- Queensland University of Technology (Australia)
- University of Queensland (Australia)
- University of Auckland (New Zealand)
- Auckland University of Technology (AUT) (New Zealand)
- UNITEC (New Zealand)
- Manukau Institute of Technology (New Zealand)

LSI Foundation Programme for Business Studies

This intensive 36 week course is a specialised course designed for entrance onto undergraduate Business degrees. The course combines IELTS preparation, academic skills development and English training with specialist subjects appropriate for Business Studies. Subjects include: Business Studies, Economics, British Culture, Information Technology. Successful completion of the Foundation Programme leads to guaranteed acceptance on a business related course at a British University.

- 30 lessons per week
- Upper Intermediate level and above
- You must have successfully graduated from high school
- Location: LSI Cambridge
- Start date: September 2009

Application Process

Enrolment on an LSI Intensive / ISY course (UK, USA, Canada, Australia & NZ) OR LSI Foundation for Business (LSI Cambridge)

Individual study plan selected

University course chosen with guidance of an LSI academic counsellor

Submission, by student, of original high school/university diplomas including English transcripts

Completed documents forwarded to universities

Conditional acceptance for the university course received or interviews arranged *

* Subject to individual university pre-requisites & government visa requirements



Exam Preparation



LSI students have a high success rate in examinations. We are happy to help you decide which examination is suitable for you.

Well structured course programmes, small classes and advice on exam strategies from experienced teachers ensure that you will be fully prepared for the examination. Please remember to check with us that the examination of your choice is available during your planned stay at LSI. Please see the LSI language centre pages for starting dates and details of courses offered.

Cambridge Preparation Courses

- 20/24/30 lessons per week
- 8/10/12 week programmes
- Minimum age 16+
- Intermediate level and above
- Starting dates and locations - see individual LSI language centre pages, for examination dates see pages 8-9

The course focuses on:

- Active use and accuracy of grammar
- Writing and reading skills
- Listening skills
- Extensive vocabulary practice
- Improving communication ability and comprehension
- Exam skills needed to obtain a high Cambridge exam grade

We also offer the Cambridge TKT course for teachers. For more details please refer to English for Teaching on page 9.

IELTS, TOEFL iBT & TOEIC Courses

- 30 lessons per week
- 4/8/10/12 week programmes
- Minimum age 16+
- Intermediate level and above
- Starting dates and locations - see individual LSI language centre pages, for examination dates see pages 8-9

Up to 20 lessons per week which concentrate on grammar input and language skills and 10 lessons per week which focus on study skills and exam practice. In these courses you will study:

- Accuracy with grammatical structures
- Communicative skills and ability
- Functional structures
- Vocabulary extension
- Active study skills
- Exam skills needed to obtain a high IELTS, TOEFL iBT or TOEIC score



Examination

ENGLISH

University of Cambridge

PET Preliminary English Test

FCE First Certificate in English

CAE Certificate of Advanced English

CPE Certificate of Proficiency in English

BEC Business English Certificate

TKT Teaching Knowledge Test

IELTS International English Language Testing System

TOEFL Test of English as a Foreign Language

TOEIC Test of English for International Communication

FRENCH

DELF Diplôme d'Études en Langue Française 1er Degré

TEF Test d'Évaluation de Français

GERMAN

ZD Zertifikat Deutsch

GZ Goethe Zertifikat

- Pre-Intermediate
- Intermediate
- Upper Intermediate
- Advanced



Since I want to study International Management I need as many foreign languages as possible in order to succeed with my application to University. The TEF (French test) and TOEFL are almost a standard must-have.



Inga Katharina Radziejewski, Germany



English for Specific Purposes



Level	Examination Dates	Description
●●●●	March, June, November, December	Accepted and highly regarded around the world as proof of competence in English
●●●●	March, June, December	
●●●●	March, June, December	
●●●●	June, December	
●●●●	March, May, June, November, December	Focuses on the core teaching knowledge needed to teach English
●●●●	Contact schools for dates	
●●●●	Frequently throughout the year	Requirement for enrolment at universities and colleges in the UK, Ireland, Australia and New Zealand
●●●●	Frequently throughout the year	Requirement for admission to universities and colleges in the USA and Canada
●●●●	Frequently throughout the year	Business English exam for international students and professionals
●●●●	May, October	Recognised by the French Ministry of Education
●●●●	Frequently throughout the year	Recognised by French speaking universities and companies
●●●●	Zürich: July, September, January-February Frankfurt: Once a month (Jan-Dec 2009)	Accepted almost universally as proof of proficiency in German
●●●●	July, September, January-February	Many universities and colleges set the GZ as an official entrance requirement

ENGLISH FOR PILOTS

This course covers all the ground theory required to gain a private or commercial pilot's licence. Practical flying sessions can also be arranged with a partner flying school at extra cost.

- Standard 20 plus 5 or 10 individual lessons per week*
- Course length: 4 weeks (20+10)* / 8 weeks (20 +5)*
- Intermediate to advanced levels
- ICAO compliant

Subjects covered: Aviation law, Licensing for Flight/Radio/Telephone Operators, Human Factors, Navigation, Meteorology and Aircraft Technology.

Starting dates: Every Monday
Language Centres: Auckland

ENGLISH FOR NURSING

This course is ideal for students who wish to study for a Bachelor of Nursing degree, or for nurses who wish to gain valuable work experience in an English speaking environment. In addition to lessons, you will have the opportunity to work part time in the Health Care industry.

- 30 lessons per week for 24 or 36 weeks
- IELTS score of 5.5 + required
- General English/ English for Nursing (mornings)
- Academic English (afternoons)
- 20 hours a week paid work experience (weekends & evenings)

Nursing English modules include: Language of the Hospitals, the Healthcare System, Health and Disease, Medical and Anatomical Terminology, Patient Assessment, Diet, Elderly Care, Alternative Treatments, and Medication.

Starting dates: Jan 5, Feb 2, Mar 2, Apr 6, May 4, Jun 2, Jul 6, Aug 3, Sep 7, Oct 5, Nov 2, Dec 7

Language Centres: Auckland and Christchurch
Please contact LSI for Work Placement fee.

ENGLISH FOR TEACHING (TKT)

Aimed at speakers of other languages, this Cambridge Certificate course is for those who wish to gain a qualification to teach English.

- 30 lessons per week for 4 weeks
- 3 modules taken
- A minimum class size of 6 required to run the course (10 in the UK)

Modules covered: Language and Background to Language Learning and Teaching, Lesson Planning and Use of Resources for Language Teaching, Managing the Teaching and Learning Process. Students will be required to keep a portfolio.

Starting dates: Please contact relevant LSI school

Language Centres: Vancouver, Auckland, Brisbane, Cambridge, San Diego and New York

LSI can also provide other subject specific language courses to organised groups. Please contact LSI for a quote.



Hi, I'm Corinne from France. I really enjoyed my time in LSI. I didn't want to leave. It's a really good experience. Thank you LSI.

Corinne Guedj, France



English for Business



English is the international language of business. So we developed a special 12 module course designed to rapidly improve your business communication skills.

- Intermediate to Advanced levels
- Course length: 1-12 weeks
- 10 lessons per week
- Afternoon option on our LSI Intensive 30 course
- Can also be part of the ISY programme
- Module cycles begin: Jan 5, Mar 30, Jun 22, Sep 14
- Students can join every Monday

In each module, through a combination of written exercises, presentations, dialogues & role-plays in realistic business situations, you will practice and improve your skills in: business vocabulary and "buzz words", email, memo and letter writing, negotiating, interviewing and telephoning in English.

Module 1	International Trade
Module 2	Developing Leadership Skills & Teambuilding
Module 3	Effective Communication in Presentations
Module 4	Decision Making, Motivation & Delegation
Module 5	Marketing & Advertising
Module 6	E-Commerce, Technology & Innovation
Module 7	Banking / Stockmarkets
Module 8	Effective Communication in Meetings
Module 9	Recruitment Interviewing
Module 10	Business Law, Ethics & Environmental Issues
Module 11	Effective Communication in Selling & Negotiations
Module 12	Management Styles in International Companies



Club 50+



At LSI we welcome mature students of all ages, who are "young at heart" on all our courses throughout the year. In addition at specific locations, we organise social activities which suit the more mature student's interests.

Some activities are free or offered at discounted rates.

- 20 lessons (50 minutes each) + 3 activities per week
- Course length: 2 weeks
- Minimum age: 50
- Elementary to Intermediate levels

Example activities include: winery visits, rain forest excursions, Maori weaving, flower arranging, boat trips, theatre visits. Activities vary according to school location.

Language centres: Auckland, Christchurch, Brisbane & London Hampstead

For starting dates please consult school pages.

We also welcome bookings from organised groups with special interests. Groups can be taught in separate classes with a specially designed social programme. Please contact us for a quote.



Study and Work Experience Programmes



An excellent opportunity to practise and develop your language skills in a business environment and gain valuable work experience.

The programme develops your communication skills so you can enjoy and benefit from your work placement. LSI offers unpaid work experience placements and paid positions.

These programmes are ideal for university-aged students or young professionals with limited experience.

ENGLAND

WORK EXPERIENCE (UNPAID)

- LSI Intensive 30 course for a minimum of 4 weeks prior to work experience
- Work Experience Placement for 2-6 months
- Select 3 industry/professional areas that you would like to work in and we will then search for a suitable placement
- Applications must be received at least 12 weeks in advance
- Minimum age: 18+

WORK EXPERIENCE (PAID)

EU Nationals

- LSI Intensive 30 or Standard 20 course for a minimum of 4 weeks prior to work placement
- Full or part-time work placement in an unskilled job for 3-6 months earning at least £4.60 per hour
- Placements are available in hotels
- Applications must be received at least 12 weeks in advance
- Minimum age: 18+

CANADA

PAID INTERNSHIP

- Long-term skilled placements available for experienced professionals after completion of at least 6 months of an LSI Intensive 30 course
- The length of the placement cannot be longer than the course
- Assistance in applying for a Canadian Work Permit will be provided

UNPAID INTERNSHIP

- LSI Intensive 30 course for a minimum of 4 weeks prior to work experience
- Short term placement of 1-3 months (3 months recommended)
- The length of the placement cannot be longer than the course

WORKING HOLIDAY

- Opportunities to train as a Banquet Server and to work short-term (for entry-level salary)
- Minimum Placement Length: 4 weeks (12 weeks recommended)
- LSI Intensive 30 course for a minimum of 4 weeks prior to work experience
- Placement can exceed study length if student obtains Working Holiday Visa
- Countries which offer Working Holiday Visa: Scandinavia, Holland, Belgium, France, Italy, Japan, Czech Republic, Latvia

USA

WORK EXPERIENCE (UNPAID)

Short term placements

- LSI Intensive 30 course for 1-12 months prior to work placement
- Short term placement for 1-2 months
- Applications must be received at least 14 weeks in advance
- Ages: 20-30

Mid and Long Term Placements

- LSI Intensive 30 course for 4-8 weeks
- 3-9 months (mid term) or 10-18 months (long term) work experience placement on an Internship or Training Programme
- Applications must be received at least 14 weeks in advance
- Ages: 20-30
- Minimum education/professional requirements*

WORK EXPERIENCE (PAID)

- LSI Intensive 30 course for 4-8 weeks
- Long term placements on an Internship (12 months) or Training Programme (12-18 months)
- Placements are available in the following areas: business, management, marketing, civil engineering, architecture, hospitality management and tourism
- Applications must be received at least 14 weeks in advance
- Ages 20-35
- Minimum education/professional requirements*

*For the Internship Programme (IP) - Currently studying on OR arriving within 12 months of graduation from either a degree course or a certificate granting post-secondary academic institution

*For the Training Programme (TP) - 5 five years of related work experience OR 1 year related work experience plus a degree certificate or higher education certificate

PLACEMENTS FEES

UK	£450
USA	
Short term unpaid	US\$950
Mid term unpaid	US\$1720 - US\$2080
Long term unpaid	US\$2425 - US\$3100
Long term paid	US\$2050 - US\$2600

CANADA	
Paid Internship	CD\$2000
Unpaid Internship	CD\$1200
Working Holiday	CD\$1200

Earn and Learn in Australia!

Students from a number of countries are able to travel to Australia on Working Holiday Visas. This means that you can

- Study up to 17 weeks
- Work for 6 months for one employer and then move to another job.
- Live in Australia for 1 year

LSI Brisbane offers help to Working Holiday Visa holders:

- English language courses to help you to improve your English
- Accommodation in homestay or shared accommodation in Brisbane.

If you have a Working Holiday Visa, you'll receive our Working Holiday Information Pack on your first day at LSI Brisbane. This tells you the sorts of jobs you can expect, pay rates, where to look for work and the forms you need to complete in Australia.

Check the Australian Government web site at www.immi.gov.au for information about Working Holiday Visa requirements.

New Zealand - Work Experience

Study and work in NZ with a 6 month student visa and IELTS 5, or on a Working Holiday Visa. Contact LSI Auckland for details.



I had a great time at LSI. It's such a good choice if you really want to improve your English skills.

Ki Hyeon Lee , student, South Korea



Accommodation and Social Programme



As well as studying the language you should get to know your host country and its people. All LSI language centres offer a choice of accommodation: you may stay with a family, in a student house, a college residential hall, a residence hotel or a hotel. All our language centres offer an active and interesting social programme.



LSI Homestays

Our carefully selected homestays offer friendly, comfortable surroundings in which you can experience what life is really like in your host country. Many of our students stay in touch with their host families for years afterwards.

LSI Residential / Student Hostels

Single and twin study bedrooms are available in student halls of residence where you can meet students from all around the world. Bathroom facilities are shared, rooms are cleaned regularly and bed linen is changed once a week. Catering arrangements differ, but most locations offer breakfast.

(Please check LSI language centre pages for availability)

Residence Hotels

More economical than hotels, residence hotels offer a more limited service. Weekly maid service is provided, and some residence hotels have kitchen facilities.

Hotels

We are happy to advise you on many different types of hotel close to our schools and make bookings at the hotel of your choice.

Self-catering Apartment / Flatshare in London

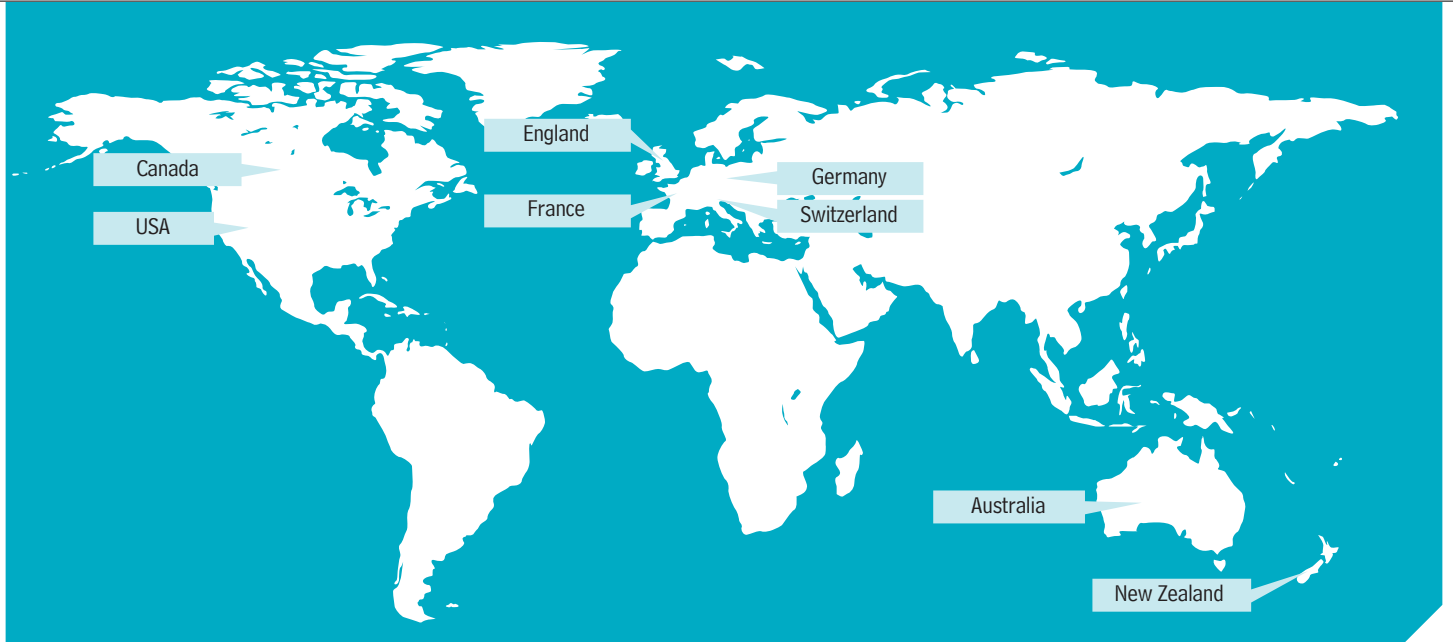
Apartments are located across London and accommodate between 4 and 6 people. Single, double and twin rooms are available. Apartments offer all essential facilities to the independent student.

LSI Social Programme

Whatever your interests or lifestyle, we will find an appropriate and enjoyable activity for you. Day trips, museum and gallery visits, theatre and cinema outings, restaurants and pubs, international events and sports fixtures are all regular features of our programme. Some activities are free and many others are offered at discounted prices. In addition, arrangements can be made in all locations for most sporting activities – just ask our staff.

Leisure and Language Programmes

Indulge your passion for sports with one of LSI's Leisure and Language Programmes. We offer many combinations including surfing at San Diego, skiing at Vancouver or Christchurch, tennis at Toronto, or sailing and scuba diving in Auckland. Please contact us for more details about these and other programmes.



LSI Multicentre Courses



See the world, immerse yourself in new cultures and practice your language proficiency with local, native speakers when you enrol on one of LSI's Multicentre Courses.



- Standard 20/Intensive 30/ISY 20/ISY 30/One-to-One
- Custom-made course combinations also available on request
- Course length: 2-48 weeks
- Beginner to Advanced levels*
- Age 16+
- Courses: every Monday*
- LSI Locations: UK, USA, Canada, Australia, New Zealand, France, Germany and Switzerland

LSI Multicentre Courses allow you to split your LSI courses between two or more language centres. This unique opportunity will allow you to learn and live the language locally whilst travelling the world at the same time. Most of all, this unforgettable experience will allow you to benefit from valuable new language skills and a higher level of fluency.

By enrolling on one of LSI's Multicentre Courses you only pay one registration fee and may even save on tuition by booking two courses in one.

Contact your first destination LSI school for more details and enrolment.

* Check school pages for definitive dates and levels

EXAMPLES OF MULTICENTRE COURSES ARE THE FOLLOWING:

4 weeks One-to-One:

- 2 weeks San Diego (USA)
- 2 weeks New York (USA)

10 weeks Intensive 30:

- 6 weeks London Hampstead (UK)
- 4 weeks Brighton (UK)

20 weeks Standard 20:

- 12 weeks Berkeley/San Francisco (USA)
- 8 weeks Toronto (Canada)

24 weeks ISY:

- 10 weeks Cambridge (UK)
- 14 weeks New York (USA)

36 weeks ISY:

- 12 weeks Paris (France)
- 12 weeks Zurich (Switzerland)
- 12 weeks London (UK)



London Central

English in England



LSI London Central

LSI London Central is located in the heart of the city, close to universities and the fashionable entertainment district of Soho, in an area full of cafes, bars and pubs catering to the lively student population. The school is comfortable and modern, with free internet access and a wide range of self-study materials available.

Leisure Programme

A full and varied leisure programme allows students to experience the very best of London and the rest of England, with activities including visits to pubs and restaurants, theatre outings and trips to Oxford, Edinburgh and Stonehenge.



London is a world-class city of great diversity, offering unrivalled attractions. From culture, history and pageantry to some of the best nightlife to be found anywhere on earth, London has something for everybody.



General Courses

Standard 20 see p4

- All levels

Intensive 30 see p4

- All levels

Afternoon Course see p4

- Intermediate to Advanced levels

Plus Courses see p4

- All levels

English for Business

see p10

- Intermediate to Advanced levels

Starting dates for Elementary to Advanced levels:

each Monday
Starting dates for students at Beginner level: Jan 5, Feb 2, Mar 2, Apr 6, May 5, Jun 1, Jul 6, Aug 3, Sep 7, Oct 5, Nov 2, Dec 7

Cambridge Exam Courses see p8

- First Certificate (FCE)
- Advanced (CAE)

Starting dates:

FCE & CAE 10 weeks: Jan 5
FCE & CAE 12 weeks: Mar 30 & Sep 21

For examination dates, see p8-9

IELTS, TOEFL iBT & TOEIC Preparation

see p8

- Upper-Intermediate to Advanced levels

International School Year see p6

- Beginner to Upper Intermediate levels

Starting dates: Jan 5, Feb 2, Mar 2, Apr 6, May 5, Jun 1, Jul 6, Aug 3, Sep 7, Oct 5, Nov 2, Dec 7

For examination dates, see p8-9

Work Experience

see p11

University Pathway

see p7

Executive Courses

One-to-One

9 Day Compact Course

Mini Group Courses

see p31-33

Public Holidays

No instruction on the following dates:
Apr 10, 13, May 4, 25, Aug 31

School is closed from Dec 19, 2009 to Jan 3, 2010.

LSI Course Prices in UK£

Prices for tuition only

General Course	1 wk	2-3 wks	4-11 wks	12-15 wks	16-19 wks	20+ wks
Standard 20	195	185	175	165	155	150
Intensive 30 / Business	265	240	215	200	190	185
Afternoon Course	100	95	90	85	80	80

Exam Preparation Courses

	4 wks	8 wks	10 wks	12 wks
TOEFL/TOEIC/IELTS	860	1720		
Cambridge Exam (20)			1750	1980
Cambridge Exam (30)			2150	2400

Courses for Individuals

Plus Course Supplement: 5 lessons/10 lessons			215/430	
Individual lesson:			43	

ISY – International School Year

	24 wks	30 wks	36 wks	48 wks
20 lessons per wk	3240	4050	4500	6000
30 lessons per wk	3840	4800	5040	6720

Executive Course Prices in UK£ See page 33

Examination Fees

FCE/CAE	£110
---------	------

Additional Fees

Registration fee	£60
Placement fee – work experience	£450
Airport transfers (one way):	
Heathrow/London City	£70
Gatwick/Stansted	£90
Luton	£90

Accommodation

Homestay

Single room per wk:

Zone 2	B&B	£140
	HB	£165
Zone 3	B&B	£130
	HB	£155
Zones 4-6	B&B	£120
	HB	£145

Twin room prices on request

Executive Supplement

per week:

B&B/HB	£25
Private bathroom B&B	£75
Private bathroom HB	£75

Supplements per week:

CHRISTMAS	£30
SUMMER (Jun 28-Aug 30)	£15

Self-catering Flat

per person, per wk:	
Single room	£170
Double room	£115

Residential Accommodation

per person, per wk:			
all year:			
Single room	B&B	£240	
Twin room	B&B	£200	
Jul-Aug:			
Single room	HB	£255	
Twin room	HB	£215	
Jun-Sep:			
Single room, self catering			£190
Single room, self catering (private bathroom)			£220

Hotel

2, 3 and 4 star hotel prices available on request.

Accredited by the



ENGLISHUK

ETS AUTHORIZED TOEFL iBT CENTER



I have enjoyed my course at LSI a lot. The "LSI staff", they have made me feel welcome, they are always nice and ready to help you with anything. Believe me! The course at LSI is the best English course I have ever taken.



Helen Andrade Zwikker, fashion student, Brazil



London Hampstead

English in England



LSI London Hampstead

Located in a residential area just 4 miles from the centre, students benefit from nearby accommodation options and easy access to London's famous sights.

The school occupies a spacious Victorian building with free wireless internet, a beautiful garden, language laboratory, table-tennis room, a lounge and a library with a wide variety of audio-visual study resources.

Leisure Programme

Barbecue parties and sports take place in the large garden. Other activities include pubs, clubs, musicals and weekend excursions.



General Courses

Standard 20 see p4

- Elementary to Advanced levels

Intensive 30 see p4

- Elementary to Advanced levels

Afternoon Course see p4

- Elementary to Advanced levels

Plus Courses see p4

- Elementary to Advanced levels

Starting dates: each Monday

Beginners at London Central only

Cambridge Exam Courses

- First Certificate (FCE)
- Advanced (CAE)
- Proficiency (CPE)

Starting dates:

FCE & CAE 10 weeks: Jan 5 FCE, CAE & CPE 12 weeks:

Mar 30 & Sep 21

For examination dates, see p8-9

IELTS, TOEFL iBT & TOEIC Preparation

see p8

- Intermediate to Advanced levels

International School Year

see p6

- Elementary to Advanced levels

Starting dates: Jan 5, Feb 2, Mar 2, Apr 6, May 5, Jun 1, Jul 6, Aug 3, Sep 7, Oct 5, Nov 2, Dec 7

For examination dates, see p8-9

Club 50 + see p10

- Elementary to intermediate levels

Starting dates: Feb 16, Apr 20, Sep 7, Dec 7

Young Learners' Programme

see p34

Work Experience

see p11

University Pathway

see p7

Executive Courses

One-to-One

see p31-33

Public Holidays

No instruction on the following dates:

Apr 10, 13, May 4, 25, Aug 31

School is closed from Dec 19, 2009 to Jan 3, 2010.

LSI Course Prices in UK£

General Course	Prices for tuition only					
	1 wk	2-3 wks	4-11 wks	12-15 wks	16-19 wks	20+ wks
Standard 20	190	180	170	160	150	145
Intensive 30	260	235	210	195	185	180
Afternoon Course	95	90	85	80	75	75
Club 50 + (wks)	360(2)					

Exam Preparation Courses

	4 wks	8 wks	10 wks	12 wks
TOEFL/TOEIC/IELTS	840	1680	2340	2340
Cambridge Exam (20)			1700	1920

Courses for Individuals

Plus Course Supplement: 5 lessons/10 lessons	215/430
Individual lesson:	43

ISY – International School Year	24 wks	30 wks	36 wks	48 wks
20 lessons per wk	3120	3900	4320	5760
30 lessons per wk	3720	4650	4860	6480

Executive Course Prices in UK£

See page 33

Examination Fees

FCE/CAE/CPE	£110
TOEIC	£80

Additional Fees

Registration fee	£60
Placement fee – work experience	£450
Airport transfers (one way):	
Heathrow/London City	£70
Gatwick/Stansted	£90
Luton	£90

Accommodation

Homestay

Single room per week:

Zone 2	B&B	£140
	HB	£165

Zone 3	B&B	£130
	HB	£155

Zones 4-6	B&B	£120
	HB	£145

Twin room prices on request

Executive Supplement

per week:

B&B/HB	£25
--------	-----

Private bathroom B&B	£75
----------------------	-----

Private bathroom HB	£75
---------------------	-----

Supplements per week:

CHRISTMAS	£30
SUMMER (Jun 28-Aug 30)	£15

Self-catering Flat

per person, per week:	
Single room	£170
Double room	£115

Residential Accommodation

Jun 27-Sep 5, per week:	
Single room B&B	£210

Student residence

Student residence (all year): prices available on request

Hotel

2, 3 and 4 star hotel prices available on request.



Accredited by the





It is a great school. We made a lot of new friends. Our host families are really nice.

Marco Sonnenberg
Marion Alamichel



Brighton

English in England

Only 50 minutes from London by train, Brighton is a vibrant city situated between the sea and the beautiful Sussex Downs. Often referred to as London-By-Sea, Brighton boasts two universities and amongst the largest arts and comedy festivals in the UK.



LSI Brighton

The school occupies a Victorian building with a garden on a quiet street in Hove, an exclusive residential area of Brighton. It is 5 minutes' walk from the beach and from Hove train station. Shops, coffee houses, pubs, restaurants and a leisure centre are all nearby.

Leisure Programme

The social programme includes parties and barbecues, quiz and games nights, nightclubs and discos, day and weekend trips to London and other parts of Britain and Europe. Activities such as golf and horse riding can also be arranged.



General Courses

Standard 20 see p4

- Elementary to Advanced levels

Intensive 30 see p4

- Elementary to Advanced levels

Afternoon Course see p4

- Intermediate to Advanced levels

Plus Courses see p4

- Elementary to Advanced levels

Starting dates: each Monday

Beginners at London Central only

English for Business

see p10

- Intermediate to Advanced levels

For starting dates please contact LSI Brighton

Cambridge Exam Courses

see p8

- First Certificate (FCE)

Starting dates:

FCE 10 weeks: Jan 5

FCE 12 weeks:

Mar 30 & Sep 21

For examination dates, see p8-9

IELTS, TOEFL iBT & TOEIC Preparation

see p8

- Intermediate to Advanced levels

International School Year

see p6

- Elementary to Upper Intermediate levels

Starting dates: Jan 5, Feb 2, Mar 2, Apr 6, May 5, Jun 1, Jul 6, Aug 3, Sep 7, Oct 5, Nov 2, Dec 7

For examination dates, see p8-9

Family Course

see p35

Work Experience

see p11

University Pathway

see p7

Executive Courses

One-to-One

9 Day Compact Course

see p31-33

Public Holidays

No instruction on the following dates:

Apr 10, 13, May 4, 25, Aug 31

School is closed from Dec 19, 2009 to Jan 3, 2010.

LSI Course Prices in UK£ Prices for tuition only

General Course	1 wk	2-3 wks	4-11 wks	12-15 wks	16-19 wks	20+ wks
Standard 20	190	180	170	160	150	145
Intensive 30 / Business	260	235	210	195	185	180
Afternoon Course	95	90	85	80	75	75

Exam Preparation Courses

	4 wks	8 wks	10 wks	12 wks
TOEFL/TOEIC/IELTS	840	1680		
Cambridge Exam (20)			1700	1920
Cambridge Exam (30)			2100	2340

Courses for Individuals

Plus Course Supplement: 5 lessons/10 lessons	215/430
Individual lesson:	43

ISY –

International School Year	24 wks	30 wks	36 wks	48 wks
20 lessons per wk	3120	3900	4320	5760
30 lessons per wk	3720	4650	4860	6480

Executive Course Prices in UK£ See page 33

Examination Fees

FCE	£110
-----	------

Additional Fees

Registration fee	£60
Placement fee – work experience	£450
Airport transfers (one way):	
Heathrow	£115
Gatwick	£60

Accommodation

Homestay		per person, per week:	
Single room	B&B	£105	
	HB	£125	
Twin room*	B&B	£95	
	HB	£115	

Supplements per wk:

EXECUTIVE	£40
CHRISTMAS	£30
SUMMER (Jun 28- Aug 30)	£15

Self-catering Accommodation

Abbey Hotel, all year, per person, per week (subject to availability):	
Single room	£150
Double room	£120

Extra night	
Single room	£30
Double room	£25

Hotel

2, 3 and 4 star hotel prices available on request.

Accredited by the





Cambridge

English in England

Many of the university colleges have amazing architecture and beautiful grounds that are open to the public. There are many traditional Cambridge pastimes to enjoy, such as spending an afternoon on the River Cam in a flat-bottomed boat called a punt.



LSI Cambridge

LSI Cambridge is perfectly situated for enjoying this picturesque, ancient university town. The school is in a quiet residential area, 15 minutes walk from the town centre. There is a lounge, a large garden, a learning centre with free internet access and self study materials.

Leisure Programme

The social programme includes barbecues, nightclubs and sports. There are popular day and weekend excursions to places such as London, Stonehenge and Stratford-Upon-Avon (Shakespeare's birthplace). Trips as far afield as Scotland or France can also be arranged.



General Courses

Standard 20 see p4

- Elementary to Advanced levels

Intensive 30 see p4

- Elementary to Advanced levels

Afternoon Course see p4

- Elementary to Advanced levels

Plus Courses see p4

- Elementary to Advanced levels

English for Business

see p10

- Intermediate to Advanced levels

Starting dates: each Monday

Beginners at London Central only.

Cambridge Exam Courses

- First Certificate (FCE)
- Advanced (CAE)

Starting dates:

FCE & CAE 10 weeks: Jan 5

FCE & CAE 12 weeks: Mar 30 & Sep 21

For examination dates, see p8-9

IELTS, TOEFL iBT & TOEIC Preparation

- Intermediate to Advanced levels

International School Year see p6

- Elementary to Upper Intermediate levels

Starting dates: Jan 5, Feb 2, Mar 2, Apr 6, May 5, Jun 1, Jul 6, Aug 3, Sep 7, Oct 5, Nov 2, Dec 7

For examination dates, see p8-9

University Foundation Programme

- Upper intermediate level and above

English for Teaching (TKT)

- Intermediate level and above

Contact school for dates

Work Experience

see p11

University Pathway

see p7

Executive Courses One-to-One 9 Day Compact Course

see p31-33

Public Holidays

No instruction on the following dates:

Apr 10, 13, May 4, 25, Aug 31

School is closed from Dec 19, 2009 to Jan 3, 2010.

LSI Course Prices in UK£

Prices for tuition only

General Course 1 2-3 4-11 12-15 16-19 20+

Prices per week wk wks wks wks wks wks

Standard 20 195 185 175 165 155 150

Intensive 30 / 265 240 215 200 190 185

Business

Afternoon Course 100 95 90 85 80 80

Exam Preparation Courses

TOEFL/TOEIC/IELTS 4 8 10 12

Cambridge Exam (20) 860 1720

Cambridge Exam (30) 1750 1980

2150 2400

University Preparation Programmes

University Foundation Programme (wks) 6480(36)

English for Specific Purposes

English for Teaching - TKT (wks) 860(4)

Courses for Individuals

Plus Course Supplement: 5 lessons/10 lessons 215/430

Individual lesson: 43

ISY - International School Year 24 30 36 48

20 lessons per wk 3240 4050 4500 6000

30 lessons per wk 3840 4800 5040 6720

Examination Fees

FCE/CAE £110

TKT £110

Additional Fees

Registration fee £60

Placement fee – work experience £450

Airport transfers (one way):

Heathrow £135

Gatwick £145

Stansted £75

Luton £85

Accommodation Homestay

per person, per week:

Single room B&B £115

HB £135

Twin room* B&B £105

HB £125

Supplements per wk:

EXECUTIVE £75

CHRISTMAS £30

SUMMER (Jun 28-Aug 30) £15

* Only when two students book together for the same start date

Residential Accommodation

per week:

Centrepoint (all year)

Single room

Self-catering £165

Sedley Ct (Jun 28-Aug 23)

Single room

Self-catering £165

Hotel

2, 3 and 4 star hotel prices available on request.

Accredited by the



Executive Course Prices in UK£ See page 33



Staff are very helpful and ambitious. You can improve your English skills very fast. It's worth the money and time. We had a lot of fun.



Carmen Stegmüller, Germany



San Diego

English in the USA

Often called "America's Finest City", San Diego lies at the southern most point of California on a beautiful natural harbour along the 70 miles of Pacific coastline between Los Angeles and Mexico.



LSI San Diego

LSI San Diego is located in a modern building in the heart of the city, close to all amenities and within easy walking distance of such attractions as San Diego Zoo, the Gaslamp District, Balboa Park and the San Diego Bay. A student resource room in the building offers a library and multimedia computers for EFL self-study.



Leisure Programme

Fantastic weather and the city's proximity to beaches, islands, mountains and deserts mean that recreational opportunities abound in the San Diego region. Social activities include beach parties, surfing, sailing and even snow skiing, and organised trips to Los Angeles, Las Vegas and Mexico.



General Courses

Standard 20 see p4

- All levels

Intensive 30 see p4

- All levels

Plus Courses see p4

- All levels

English for Business

see p10

- Intermediate to Advanced levels

Starting dates for Elementary to Advanced levels: each Monday (1st Monday of every month is recommended)

Starting dates for students at Beginner level: Jan 5, Feb 2, Mar 2, Apr 6, May 4, Jun 1, Jul 6, Aug 3, Sep 8, Oct 5, Nov 2, Dec 7

Cambridge Exam Courses see p8

- First Certificate (FCE)
- Advanced (CAE)
- Proficiency (CPE)
- Business (BEC) Vantage

Starting dates:
FCE & CAE 10 weeks: Jan 5
FCE, CAE & CPE 12 weeks:
Mar 30 & Sep 21
BEC (Vantage) 10 weeks:
Jan 12, Mar 30

For examination dates, see p8-9

TOEFL iBT & TOEIC Preparation see p8

- Intermediate to Advanced levels

International School Year see p6

- Beginner to Upper Intermediate levels

Starting dates: Jan 5, Feb 2, Mar 2, Apr 6, May 4, Jun 1, Jul 6, Aug 3, Sep 8, Oct 5, Nov 2, Dec 7

For examination dates, see p8-9

English for Teaching (TKT) see p9

- Intermediate level and above

Contact school for dates

Young Learners' Programme see p35

- **Work Experience** see p11
- **University Pathway** see p7

Executive Courses One-to-One

9 Day Compact Course Mini Group Courses see p31-33

Public Holidays

No instruction on the following dates:

Jan 19, Feb 16, Apr 10, 13, May 25, Jul 3, Sep 7, Oct 12, Nov 26, 27

School is closed from Dec 19, 2009 to Jan 3, 2010.

LSI Course Prices in US\$

Prices for tuition only

General Course	1 wk	2-3 wks	4-11 wks	12-15 wks	16-19 wks	20+ wks
Standard 20	355	300	270	250	240	230
Intensive 30 / Business	445	360	330	315	300	285

Exam Preparation Courses	4 wks	8 wks	10 wks	12 wks
TOEFL/TOEIC	1320	2640		3780
Cambridge Exam (30)			3300	3780

English for Specific Purposes	English for Teaching - TKT (wks)	1320(4)
-------------------------------	----------------------------------	---------

Courses for Individuals	Plus Course Supplement: 5 lessons/10 lessons	360/720
Individual lesson:		72

ISY - International School Year	24 wks	30 wks	36 wks	48 wks
20 lessons per wk	5280	6600	7560	10080
30 lessons per wk	6240	7800	9000	12000

Executive Course Prices in US\$ See page 33

Examination Fees

FCE/CAE/CPE	US\$350
BEC Vantage	US\$350
TKT	US\$350

Additional Fees

Registration fee	US\$120
Placement fee - work experience from US\$950 to US\$3100, see p11	
Airport transfers (one way)	US\$80

Accommodation Homestay

per person, per week:	
Single room B&B	US\$185
HB	US\$250

Supplements per wk:

EXECUTIVE	US\$80
CHRISTMAS	US\$30
SUMMER (Jun 28- Aug 30)	US\$30

Residential Accommodation

per person, per week:	
500 West Hotel (no meals, shared bathrooms)	
Single room	US\$280
Double room*	US\$220
West Park Inn (no meals, private bathrooms)	
Single room	US\$340
Double room*	US\$220

* Only when two students book together for the same dates

Hotel
2, 3 and 4 star hotel prices available on request.



San Francisco / Berkeley

English in the USA



LSI Berkeley

The school occupies a two-storey building in downtown Berkeley with indoor and outdoor common areas and a large, glass-covered atrium, close to the station and the university campus. There is free internet use in two student computer rooms, as well as a kitchen, library and study rooms.

Leisure Programme

Berkeley, home of the prestigious University of California, is a colourful, student-oriented city in Northern California, just across the bay from San Francisco, and abounds with restaurants, cinemas, cafes and bookshops. The Bay Area affords a wealth of famous attractions, such as the Golden Gate Bridge, Fisherman's Wharf and Alcatraz, and visits to places such as the Wine Country and the Monterey Peninsula are easily arranged.



The San Francisco Bay Area is a beautiful part of California, with a more temperate climate than the surrounding area, and its architecture and landmarks are famous across the world. One of the most laidback and friendly places in the world, San Francisco and the Bay Area offer everything the visitor could want.



General Courses

- Standard 20** see p4
- Elementary to Advanced
- Intensive 30** see p4
- Elementary to Advanced
- Plus Courses** see p4
- Elementary to Advanced
- English for Business** see p10
- Intermediate to Advanced levels

Starting dates: each Monday (1st Monday of every month is recommended)

Cambridge Exam Courses

- First Certificate (FCE)
- Advanced (CAE)
- 10 lessons per week as part of Intensive 30

Starting dates:
FCE & CAE 12 weeks:
Mar 30 & Sep 21
For examination dates,
see p8-9

TOEFL IBT & TOEIC Preparation

- see p8
- Intermediate to Advanced levels

International School Year

- see p6
- Elementary to Upper Intermediate levels

Starting dates: Jan 5, Feb 2, Mar 2, Apr 6, May 4, Jun 1, Jul 6, Aug 3, Sep 8, Oct 5, Nov 2, Dec 7

For examination dates,
see p8-9

Work Experience

see p11

University Pathway

see p7

Executive Courses

One-to-One

9 Day Compact Course

Mini Group Courses

see p31-33

Public Holidays

No instruction on the following dates:

Jan 19, Feb 16, Apr 10, 13, May 25, Jul 3, Sep 7, Oct 12, Nov 26, 27

School is closed from Dec 19, 2009 to Jan 3, 2010.

LSI Course Prices in US\$

Prices for tuition only

General Course	1 wk	2-3 wks	4-11 wks	12-15 wks	16-19 wks	20+ wks
Standard 20	355	300	270	250	240	230
Intensive 30 / Business	445	360	330	315	300	285

Exam Preparation Courses

	4 wks	8 wks	10 wks	12 wks
TOEFL/TOEIC	1320	2640		3780
Cambridge Exam (30)				3780

Courses for Individuals

Plus Course Supplement: 5 lessons/10 lessons				360/720
Individual lesson:				72

ISY -

International School Year	24 wks	30 wks	36 wks	48 wks
20 lessons per wk	5280	6600	7560	10080
30 lessons per wk	6240	7800	9000	12000

Executive Course Prices in US\$

See page 33

Examination Fees

FCE/CAE	US\$350
---------	---------

Additional Fees

Registration fee	US\$120
Placement fee - work experience from US\$950 to US\$3100, see p11	
Airport transfers (one way)	US\$95

Accommodation

Homestay

per person, per week:

Single room	B&B	US\$185
	HB	US\$250

Supplements

per wk:

EXECUTIVE	US\$80
CHRISTMAS	US\$30
SUMMER	US\$30

(Jun 28-Aug 30)

Residence Halls Accommodation

Tau House, all year: double and triple room prices available on request. A US\$200 key/ damage refundable required when booking. Downtown Berkeley YMCA, all year: Single and double room prices available on request. A US\$ 50 fee is included per booking.

University of California (summer only): Single and double rooms. Dates and prices available on request. A US\$50 key/damage refundable deposit will be charged. Full payment required 3 weeks in advance. No cancellation.

Hotel

2, 3 and 4 star hotel prices available on request.



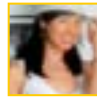
Information on accreditation:
www.aieap.org



American Association of International English Programs



LSI is a very good language school. I love the location, it's great to study English in NY. The teachers are very professional and really care about my progress. The classes are very small so I get a lot of personal attention. I've improved my English a lot in a very short time.



Tae Ran Lee, Korean movie star



New York

English in the USA



LSI New York

Located on the Manhattan campus of the Metropolitan College of New York (MCNY) in SoHo, near the Financial District, LSI New York is at the very heart of this most cosmopolitan of cities. Facilities include a library, a lounge, and two computer labs with over 40 computers offering free internet access.

Leisure Programme

With its 24-hour buzz, excellent restaurants, museums and famous landmarks such as the Statue of Liberty and the Empire State Building, New York's cultural and entertainment possibilities are limitless, and this is reflected in our busy and varied social programme.



General Courses

Standard 20 see p4

- All levels

Intensive 30 see p4

- All levels

Plus Courses see p4

- All levels

English for Business

see p10

- Intermediate to Advanced levels

Starting dates for Elementary to Advanced levels: each Monday (1st Monday of every month is recommended)

Starting dates for students at Beginner level: Jan 5, Feb 2, Mar 2, Apr 6, May 4, Jun 1, Jul 6, Aug 3, Sep 8, Oct 5, Nov 2, Dec 7

Cambridge Exam Courses see p8

- First Certificate (FCE)
- Advanced (CAE)

• 10 lessons per week as part of Intensive 30

Starting dates:

FCE & CAE 10 weeks: Jan 5

FCE & CAE 12 weeks:

Mar 30 & Sep 21

For examination dates, see p8-9

TOEFL iBT Preparation see p8

- Intermediate to Advanced levels

International School Year see p6

- Beginner to Upper Intermediate levels

Starting dates: Jan 5, Feb 2, Mar 2, Apr 6, May 4, Jun 1, Jul 6, Aug 3, Sep 8, Oct 5, Nov 2, Dec 7

For examination dates, see p8-9

English for Teaching (TKT) see p9

- Intermediate level and above

Contact school for dates and exam fees

Work Experience see p11

University Pathway see p7

Executive Courses

One-to-One

Mini Group Courses see p31-33

Public Holidays

No instruction on the following dates:

Jan 19, Feb 16, Apr 10, 13, May 25, Jul 3, Sep 7, Oct 12, Nov 26, 27

School is closed from Dec 19, 2009 to Jan 3, 2010.

LSI Course Prices in US\$

Prices for tuition only

General Course	1 wk	2-3 wks	4-11 wks	12-15 wks	16-19 wks	20+ wks
Standard 20	355	320	290	270	260	250
Intensive 30 / Business	445	390	360	335	320	305

Exam Preparation Courses

	4 wks	8 wks	10 wks	12 wks
TOEFL	1440	2880	4020	4020
Cambridge Exam (30)			3600	4020

English for Specific Purposes

English for Teaching - TKT (wks)	1440(4)
----------------------------------	---------

Courses for Individuals

Plus Course Supplement: 5 lessons/10 lessons	385/770
Individual lesson:	77

ISY -

International School Year	24 wks	30 wks	36 wks	48 wks
20 lessons per wk	5520	6900	7920	10560
30 lessons per wk	6480	8100	9360	12480

Executive Course Prices in US\$ See page 33

Examination Fees

FCE/CAE	US\$400
---------	---------

Additional Fees

Registration fee* US\$120

* 10% if your tuition fees are below US\$1000

Placement fee -

work experience from

US\$950 to US\$3100, see p11

Airport transfers US\$120 (one way)

Accommodation

Homestay

Single room per person, per week:

Outside Manhattan:

B&B US\$260

HB US\$325

In Manhattan:

B&B US\$485

Supplements per wk:

EXECUTIVE (in Manhattan, private bathroom) US\$180

CHRISTMAS US\$30

SUMMER US\$30

(Jun 28-Aug 30)

Residential Accommodation

Continental Student Residence

per person, per week:

Double rooms** US\$330

Quadruple rooms** US\$260

YMCA Residence in Manhattan

no meals (includes access to sports and fitness facilities)

Single room, shared bath US\$460

Twin room**, shared bath US\$275

** per person; only available for students booking and arriving together

Hotel

2, 3 and 4 star hotel prices available on request.



Boston

English in the USA



LSI Boston

LSI Boston is situated in a commercial brownstone on the borders of Chinatown and the Theatre and Financial Districts. Many classrooms feature the exposed red brick walls typical of the local architecture. Among the facilities provided for students are a computer room and lounge, with daily newspapers available.

Leisure Programme

Social activities include museum trips, historical walking tours, baseball games, snowboarding and weekend trips to Cape Cod, New York and Montreal.



General Courses

- Standard 20** see p4
 - Elementary to Advanced
- Intensive 30** see p4
 - Elementary to Advanced
- Plus Courses** see p4
 - Elementary to Advanced
- English for Business** see p10
 - Intermediate to Advanced levels

Starting dates: each Monday (1st Monday of every month is recommended)

TOEFL iBT & TOEIC Preparation

- Intermediate to Advanced levels

International School Year

Starting dates: Jan 5, Feb 2, Mar 2, Apr 6, May 4, Jun 1, Jul 6, Aug 3, Sep 8, Oct 5, Nov 2, Dec 7

For examination dates, see p8-9

Work Experience

see p11

University Pathway

see p7

Executive Courses

One-to-One 9 Day Compact Course

see p31-33

Public Holidays

No instruction on the following dates:

Jan 19, Feb 16, Apr 10, 13, May 25, Jul 3, Sep 7, Oct 12, Nov 26, 27

School is closed from Dec 19, 2009 to Jan 3, 2010.

LSI Course Prices in US\$

Prices for tuition only

General Course	1 wk	2-3 wks	4-11 wks	12-15 wks	16-19 wks	20+ wks
Standard 20	355	300	270	250	240	230
Intensive 30 / Business	445	360	330	315	300	285

Exam Preparation Courses	4 wks	8 wks	10 wks	12 wks
TOEFL/TOEIC	1320	2640		3780

Courses for Individuals	5 lessons/10 lessons	360/720
Individual lesson:		72

ISY – International School Year	24 wks	30 wks	36 wks	48 wks
20 lessons per wk	5280	6600	7560	10080
30 lessons per wk	6240	7800	9000	12000

Executive Course Prices in US\$

See page 33

Additional Fees

Registration fee	US\$120
Placement fee – work experience from US\$950 to US\$3100, see p11	
Airport transfers (one way)	US\$90

Accommodation

Homestay	per person, per week:
Single room	B&B US\$185
	HB US\$250
Supplements per wk:	
EXECUTIVE	US\$80
CHRISTMAS	US\$30
SUMMER (Jun 28-Aug 30)	US\$30

Residence Halls Accommodation

(all year, 2-4 persons per room, including breakfast & dinner), per person:

One wk	US\$575
Two wks	US\$995
Three wks	US\$1290
Four wks	US\$1440
Extra night	US\$116

A US\$200 key/damage deposit will be charged and will be refunded upon return of key.

Boston YMCA – The Berkeley Residence: Single and double rooms available on request.

Hotel

2, 3 and 4 star hotel prices available on request.





Toronto

English in Canada



LSI Toronto

Located in Rosedale, one of the most beautiful residential neighbourhoods in Canada's largest city, LSI Toronto is well placed for exploring all that the area has to offer. The school occupies the 2nd and 3rd floors of a unique modern building with an open-air courtyard, common room, kitchen facilities and student computer room.

Leisure Programme

Social activities at LSI Toronto include picnics in summer, ice-skating in winter, and year-round trips to Niagara Falls, historic sites and beautiful natural parks.



General Courses

Standard 20 see p4
 • Elementary to Advanced
Intensive 30 see p4
 • Elementary to Advanced
Plus Courses see p4
 • Elementary to Advanced
English for Business see p10
 • Intermediate to Advanced levels
 • 10 lessons per week. (5 business lessons + 5 professional conversation lessons)
 Starting dates: each Monday
 Beginners at Vancouver only

Cambridge Exam Courses

see p8
 • First Certificate (FCE)
 • Advanced (CAE)
 Starting dates:
 FCE & CAE 12 weeks:
 Mar 30 & Sep 21
 3 week Pre-Cambridge course available. Contact school for more details
 For examination dates, see p8-9

TOEFL iBT & TOEIC Preparation

see p8
 • Intermediate to Advanced levels

International School Year

see p6
 • Elementary to Upper Intermediate levels
 Starting dates: Jan 5, Feb 2, Mar 2, Apr 6, May 4, Jun 1, Jul 6, Aug 3, Sep 8, Oct 5, Nov 2, Dec 7
 For examination dates, see p8-9

Young Learners' Programme

see p34

Work Experience

see p11

University Pathway

see p7

Executive Courses

One-to-One
9 Day Compact Course
Mini Group Courses
 see p31-33

Public Holidays

No instruction on the following dates:
 Feb 16, Apr 10, 13, May 18, Jul 1, Sep 7, Oct 12, Nov 11
 School is closed from Dec 19, 2009 to Jan 3, 2010.

LSI Course Prices in CD\$

Prices for tuition only

General Course	1 wk	2-3 wks	4-11 wks	12-15 wks	16-19 wks	20+ wks
Standard 20	290	280	270	250	240	230
Intensive 30 / Business	350	340	330	315	300	285

Exam Preparation Courses	4 wks	8 wks	10 wks	12 wks
TOEFL/TOEIC	1320	2640		3780
Cambridge Exam (30)				3780

Courses for Individuals

Plus Course Supplement: 5 lessons/10 lessons	360/720
Individual lesson:	72

ISY -

International School Year	24 wks	30 wks	36 wks	48 wks
20 lessons per wk	5280	6600	7560	10080
30 lessons per wk	6240	7800	9000	12000

Executive Course Prices in CD\$

See page 33

Examination Fees

FCE	CD\$300
CAE	CD\$300

Additional Fees

Registration fee	CD\$120
Placement fee - work experience from CD\$1200 to CD\$2000, see p11	
Airport transfers (one way)	CD\$100

Accommodation

Accommodation	CD\$150
placement fee	

Homestay

Per person, per week:	
Single room	B&B CD\$185
	HB CD\$215

Supplements per wk:

EXECUTIVE	CD\$60
SUMMER (Jun 28-Aug 30)	CD\$20

Residential Accommodation

per week:	
Global Village Backpackers Hostel (all year)	
Single room	B&B CD\$480
Dormitory	B&B CD\$200
Neil Wycik Residence (May 4 - Aug 27)	
Single room	B&B CD\$240

Campus Accommodation

Ryerson University, per week (May 15-Aug 21)	
Single room	B&B CD\$155

A CD\$50 key/damage deposit will be charged and will be refunded upon return of key.

Hotel

2, 3 and 4 star hotel prices available on request.



ETS AUTHORIZED TOEFL iBT CENTER



If you want to attend a friendly school, go to LSI. The staff and students are friendly and the range of nationalities is amazing!



Tirza S, Switzerland



Vancouver

English in Canada

The harbour city of Vancouver has long been regarded simply as one of the most spectacular cities in the world. Nestled between the snow-capped Coastal Mountains and the Pacific Ocean, Vancouver is a city of stunning natural beauty. It is also a modern city, with everything to appeal to the international visitor.



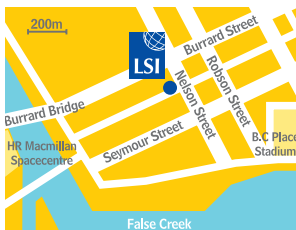
LSI Vancouver

Located on the 1st floor of a modern office tower in the centre of the downtown area, LSI Vancouver offers a computer room with internet access, multimedia self-study materials and kitchen facilities. The school is conveniently located for bus, Seabus and Skytrain transportation links and the city's main attractions.



Leisure Programme

As well as outings to the affordable restaurants and coffee shops for which Vancouver is famous, the social programme includes days at the beach, major sporting events with Vancouver's world-class professional teams, and weekend trips to Victoria, the Rocky Mountains and Whistler.



General Courses

Standard 20 see p4

- All levels

Intensive 30 see p4

- All levels

Plus Courses see p4

- All levels

English for Business

see p10

- Intermediate to Advanced levels

Starting dates for Elementary to Advanced levels: each Monday

Starting dates for students at Beginner level: Jan 5, Feb 2, Mar 2, Apr 6, May 4, Jun 1, Jul 6, Aug 4, Sep 8, Oct 5, Nov 2, Dec 7

Cambridge Exam Courses see p8

- First Certificate (FCE)
- Advanced (CAE)

Starting dates:

FCE & CAE 10 weeks: Jan 5

FCE & CAE 12 weeks:

Mar 30 & Sep 21

3 week Pre-Cambridge course available. Contact school for more details

For examination dates, see p8-9

TOEFL iBT & TOEIC Preparation see p8

- Intermediate to Advanced levels

Intermediate School Year see p6

- Beginner to Upper Intermediate levels

Starting dates: Jan 5, Feb 2, Mar 2, Apr 6, May 4, Jun 1, Jul 6, Aug 4, Sep 8, Oct 5, Nov 2, Dec 7

For examination dates, see p8-9

English for Teaching (TKT) see p9

- Intermediate level and above

Contact school for dates

Work Experience

see p11

University Pathway

see p7

Executive Courses One-to-One

9 Day Compact Course

Mini Group Courses

see p31-33

Public Holidays

No instruction on the following dates:

Apr 10, 13, May 18, Jul 1, Aug 3, Sep 7, Oct 12, Nov 11
School is closed from Dec 19, 2009 to Jan 3, 2010.

LSI Course Prices in CD\$

Prices for tuition only

General Course	1 wk	2-3 wks	4-11 wks	12-15 wks	16-19 wks	20+ wks
Standard 20	290	280	270	250	240	230
Intensive 30 / Business	350	340	330	315	300	285

Exam Preparation Courses

	4 wks	8 wks	10 wks	12 wks
TOEFL/TOEIC	1320	2640		3780
Cambridge Exam (30)			3300	3780

English for Specific Purposes

English for Teaching - TKT (wks)	1320(4)
----------------------------------	---------

Courses for Individuals

Plus Course Supplement: 5 lessons/10 lessons	360/720
Individual lesson:	72

ISY –

International School Year	24 wks	30 wks	36 wks	48 wks
20 lessons per wk	5280	6600	7560	10080
30 lessons per wk	6240	7800	9000	12000

Executive Course Prices in CD\$ See page 33

Examination Fees

FCE	CD\$300
CAE	CD\$300
TKT	CD\$350

Additional Fees

Registration fee	CD\$120
Placement fee – work experience from CD\$1200 to CD\$2000, see p11	
Airport transfers (one way)	CD\$95

Accommodation

Accommodation placement fee	CD\$150
-----------------------------	---------

Homestay

Per person, per week:	
Single room	B&B CD\$185
	HB CD\$215

Supplements per wk:

EXECUTIVE	CD\$60
SUMMER (Jun 28-Aug 30)	CD\$20

Campus Accommodation

University of British Columbia, per week (May 17-Aug 23):
Single room B&B CD\$450

A CD\$50 key/damage deposit will be charged and will be refunded upon return of key.

Student Residence

Prices available on request, subject to availability.

Hotel

2, 3 and 4 star hotel prices available on request.



ETS AUTHORIZED TOEFL iBT CENTER



The course was fantastic!

Christoph Leiterer,
Switzerland



Auckland

English in New Zealand

Auckland, the gateway to New Zealand, is a unique city of two harbours that have earned it the name "City of Sails". With its multicultural mix of people, spectacular views and breathtaking scenery, Auckland is one of the world's most pleasant and exciting cities.



LSI Auckland

LSI Auckland is based in the LSI Building where classrooms overlook the phoenix palms in Myers Park. There are excellent public transport links and amenities within a few minutes' walk, as well as student rooms, libraries and computers for student use. Our student population boasts an average of 17 different nationalities.

Leisure Programme

As the financial and cultural heart of New Zealand, Auckland has much to offer the visitor – from attractive shopping amenities to exhibitions of Maori and Polynesian art. The social programme is second to none, with an unbeaten LSI football team and endless recreational possibilities, from skydiving to skiing, from wine-tasting to walks in the New Zealand bush.



General Courses

Standard 20 see p4

- All levels

Intensive 30 see p4

- All levels

Afternoon Course see p4

- Elementary to Advanced levels

Plus Courses see p4

- All levels

English for Business

see p10

- Intermediate to Advanced levels

Starting dates for Elementary to Advanced levels: Each Monday. Starting dates for students at Beginner level: Jan 5, Feb 2, Mar 2, Apr 6, May 4, Jun 2, Jul 6, Aug 3, Sep 7, Oct 5, Nov 2, Dec 7

Cambridge Exam Courses

see p8

- Preliminary (PET)
- First Certificate (FCE)
- Advanced (CAE)
- Proficiency (CPE)
- Business (BEC)

Starting dates: PET 10 weeks: Mar 30 & Sep 14. FCE, CAE & CPE 8 weeks: Apr 27, Oct 19. FCE & CAE 10 weeks: Jan 5. FCE, CAE & CPE 10 weeks: Apr 13 & Oct. 5 FCE, CAE & CPE 12 weeks: Mar 30 & Sep 21. BEC Vantage 2-10 weeks: Jan 12, Mar 23 & Sep 28. For examination dates, see p8-9

IELTS Intensive Preparation

see p8

- 30 lessons per week
 - Intermediate to Advanced levels
 - 12 weeks
- Starting dates: Jun 29

IELTS, TOEFL iBT & TOEIC Preparation

- Afternoon option on LSI Intensive 30 course
- Intermediate to Advanced levels

International School Year

- Beginner to Advanced levels

Starting dates: Jan 5, Feb 2, Mar 2, Apr 6, May 4, Jun 2, Jul 6, Aug 3, Sep 7, Oct 5, Nov 2, Dec 7. For examination dates, see p8-9

English for Pilots

see p9

English for Nursing

see p9

English for Teaching (TKT)

see p9

- Intermediate level and above
- Starting dates: Jan 12, Mar 23, Jun 2, Aug 10, Oct 19, Nov 23

Club 50 +

see p10
Starting dates: Jan 5, Feb 2, Mar 2, Apr 6, May 4, Jun 2, Jul 6, Aug 3, Sep 7, Oct 5, Nov 2, Dec 7

Work Experience

see p11

University Pathway

see p7

Executive Courses

One-to-One

Mini Group Courses

see p31-33

Public Holidays

No instruction on the following dates: Jan 26, Feb 6, Apr 10, 13, 25*, Jun 1, Oct 26

School is closed from Dec 19, 2009 to Jan 3, 2010. *This date falls on a Saturday so the Fri or Mon may be taken as a day's holiday in lieu

LSI Course Prices in NZ\$

Prices for tuition only

General Course	1 wk	2-3 wks	4-11 wks	12-15 wks	16-19 wks	20+ wks
Standard 20	250	250	250	250	250	250
Intensive 30 / Business	360	360	360	360	360	360
Afternoon Course	125	125	125	125	125	125
Club 50 + (wks)						500(2)

Exam Preparation Courses

	4 wks	8 wks	10 wks	12 wks
TOEFL/TOEIC/IELTS	1440	2880	3600	4320
Cambridge Exam (30)		2880	3600	4320

English for Specific Purposes

English for Nursing (wks)	6480(24)	9360(36)
English for Pilots (wks+ plus course)	4200	5200
English for Teaching - TKT (wks)	(4+ plus 10)	(8+ plus 5)
	1440(4)	1440(4)

Courses for Individuals

Plus Course Supplement: 5 lessons/10 lessons	400/800
Individual lesson:	80

ISY –

International School Year	24 wks	30 wks	36 wks	48 wks
30 lessons per wk	6480	8100	9360	12480

Executive Course Prices in NZ\$

See page 33

Examination Fees

PET/BEC	NZ\$230/270
FCE/CAE/CPE	NZ\$290
TOEIC/IELTS	NZ\$320/295
TKT	NZ\$290

Additional Fees

Registration fee	NZ\$120
Late booking fee (Cambridge Exam)	NZ\$70
Text books for Cambridge Exam (2)	NZ\$140
Course materials per week up to max. of NZ\$300 (not Cambridge Exam students)	NZ\$15
Meet and greet (one way)	NZ\$90

Accommodation

Accommodation and NZ\$200 hostel placement fee

Homestay

Per person, per week:
Single room B&B NZ\$165
HB NZ\$200

Supplements

per wk:
EXECUTIVE NZ\$70

Student Residence

(all year, minimum stay 2 weeks, minimum age 18 years):
City Lodge (no meals) single room with private bathroom. weeks 2-4, per week NZ\$345
additional week NZ\$235

Hotel

2, 3 and 4 star hotel prices available on request.

ETS AUTHORIZED
TOEFL iBT CENTER

ENGLISH NEW ZEALAND
THE ULTIMATE LEARNING EXPERIENCE

TOEIC
Authorized
Test Centre



Christchurch

English in New Zealand

Internationally famed as the "Garden City", Christchurch is renowned for its natural beauty and wealth of cultural and entertainment possibilities.

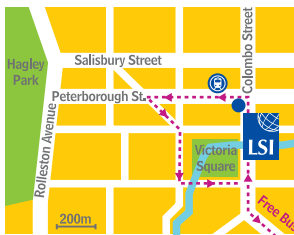


LSI Christchurch

LSI Christchurch is in the centre of "Garden City", perfectly located for experiencing the cosmopolitan life of New Zealand's second largest city. The facilities are excellent, and include a comfortable student common room, computers with free internet access, private study and self-study materials.

Leisure Programme

Often described as the most English city outside of England, Christchurch is filled with beautiful architecture, parks and leafy suburbs. The natural beauty of the area is famous – to the East is the sea, to the West lie forests, lakes and the Southern Alps, and to the North are rolling hills and miles of empty beaches. Accordingly the social activities are varied, and include fishing, skiing and learning about Maori culture.



General Courses

Standard 20 see p4
• All levels

Intensive 30 see p4
• All levels

Afternoon Course see p4
• Elementary to Advanced levels

Plus Courses see p4
• All levels

Starting dates for Elementary to Advanced levels:
Each Monday

Starting dates for students at Beginner level: Jan 5, Feb 2, Mar 2, Apr 6, May 4, Jun 2, Jul 6, Aug 3, Sep 7, Oct 5, Nov 2, Dec 7

Cambridge Exam Courses

see p8
• First Certificate (FCE)

Starting dates:
FCE 10 weeks: Jan 5
FCE 12 weeks:
Mar 30 & Sep 21

For examination dates, see p8-9

IELTS & TOEIC Preparation Courses

see p8
• Intermediate to Advanced

Starting dates:
Please contact LSI Christchurch for details

International School Year

see p6
• Beginner to Advanced
Starting dates: Jan 5, Feb 2, Mar 2, Apr 6, May 4, Jun 2, Jul 6, Aug 3, Sep 7, Oct 5, Nov 2, Dec 7

English for Nursing

see p9

Club 50 +

see p10
• Elementary to intermediate levels
Starting dates: Jan 5, Feb 2, Mar 2, Apr 6, May 4, Jun 2, Jul 6, Aug 3, Sep 7, Oct 5, Nov 2, Dec 7

Work Experience

see p11

University Pathway

see p7

Executive Courses

One-to-One
see p31-33

Public Holidays

No instruction on the following dates:
Feb 6, Apr 10, 13, 25*, Jun 1, Oct 26, Nov 13
School is closed from Dec 19, 2009 to Jan 3, 2010.

*This date falls on a Saturday so the Friday or Monday may be taken as a day's holiday in lieu.

LSI Course Prices in NZ\$

Prices for tuition only

General Course	1 wk	2-3 wks	4-11 wks	12-15 wks	16-19 wks	20+ wks
Standard 20	250	250	250	250	250	250
Intensive 30	360	360	360	360	360	360
Afternoon Course	125	125	125	125	125	125
Club 50 + (wks)	500(2)					

Exam Preparation Courses

TOEIC/IELTS	3600	10 wks	12 wks
Cambridge Exam (30)	3600	3600	4320

English for Specific Purposes

English for Nursing (wks)	6480(24)	9360(36)
---------------------------	----------	----------

Courses for Individuals

Plus Course Supplement: 5 lessons/10 lessons	400/800
Individual lesson:	80

ISY –

International School Year	24 wks	30 wks	36 wks	48 wks
30 lessons per wk	6480	8100	9360	12480

Executive Course Prices in NZ\$

See page 33

Examination Fees

FCE	NZ\$290
TOEIC	NZ\$320
IELTS	NZ\$295

Additional Fees

Registration fee	NZ\$120
Late booking fee (Cambridge Exam)	NZ\$70
Text books for Cambridge Exam (2)	NZ\$140
Course materials per week up to max. of \$300 (not Cambridge Exam students)	NZ\$15
Meet and greet (one way)	NZ\$90

Accommodation

Accommodation and NZ\$200 hostel placement fee

Homestay

Per person, per week:
Single room B&B NZ\$165
HB NZ\$200

Supplements per wk:
EXECUTIVE NZ\$70

Student Residence /Self-catering Apartments/Flatshare /Studio Units/Hostel:
prices on request, all year round, subject to availability, over 18's only.

Hotel

2, 3 and 4 star hotel prices available on request.





I would like to thank my teachers and all the staff. I had a really great time for six months here. I think my English improved a lot. I will never forget all the things I did here.



Carol Timperman, Belgium



Brisbane

English in Australia



LSI Brisbane

LSI Brisbane is located in a heritage building in the heart of this sophisticated yet relaxed subtropical city, close to shops, restaurants and public transport links. The school is fully air-conditioned, and there are kitchen facilities on both floors, as well as a computer room with free internet access and a library for quiet study.

Leisure Programme

The Queen Street Mall, the Botanical Gardens and the Riverside Centre with its outdoor cafes overlooking the Brisbane River are only a short stroll away and outstanding attractions such as beaches and rainforests can be reached in less than an hour.

The social programme encompasses all that is best about Australia's 'Sunshine State', including sightseeing, sports and weekend excursions.



General Courses

- Standard 20** see p4
• 20 lessons per week (1-12 weeks) • All levels
- Intensive 24***
• 24 lessons per week (1-50 weeks) • 2 days (6 lessons), 3 days (4 lessons) • All levels
- Intensive 30*** see p4
• All levels
- Plus Courses** see p4
• All levels

English for Business

- see p10
- Intermediate to Advanced levels
- Starting dates for Elementary to Advanced levels: each Monday. Starting dates for students at Beginner level: Jan 5, Feb 2, Mar 2, Apr 6, May 5, Jun 1, Jul 6, Aug 3, Sep 7, Oct 5, Nov 2, Dec 7

Cambridge Exam Courses*

- see p8
- Preliminary (PET)
- First Certificate (FCE)
- Advanced (CAE)
- Business (BEC Vantage)
- 24 lessons per week option only available FCE and CAE

Starting dates: FCE & CAE 10 wks: Jan 5, Apr 14 & Oct 5. FCE & CAE 12 wks: Mar 30 & Sep 21. PET & BEC 10 weeks: Jan 12, Mar 30 & Sep 28. For examination dates, see p8-9

IELTS Intensive Preparation*

- see p8
- 30 lessons per week
- Intermediate level
- 12 weeks
- Starting dates: Jan 5, Jul 6

TOEIC, TOEFL iBT & IELTS Preparation

- see p8
- Afternoon option on LSI Intensive 30 course
- Pre-Intermediate to Advanced levels

International School Year*

- see p6
- Beginner to Intermediate levels
- Starting dates: Jan 5, Feb 2, Mar 2, Apr 6, May 5, Jun 1, Jul 6, Aug 3, Sep 7, Oct 5, Nov 2, Dec 7. For examination dates, see p8-9

English for Teaching(TKT)

- see p9
- Intermediate level and above
- Contact school for dates

Club 50 +

- see p10
- Elementary to intermediate levels
- Starting dates: Mar 16, May 11, Jun 15, Sep 7

Work Experience

- see p11
- University Pathway** see p7

Executive Courses One-to-One

- see p31-33
- Public Holidays**
No instruction on the following dates:
Jan 26, Apr 10, 13, May 4, Jun 8, Aug 12
School is closed from Dec 19, 2009 to Jan 3, 2010.

*These courses are suitable for student visa holders.

LSI Course Prices in AU\$

	1 wk	2-3 wks	4-11 wks	12-15 wks	16-19 wks	20+ wks
General Course						
Standard 20	235	235	230	220		
Intensive 24	275	275	270	260	250	240
Intensive 30 / Business	325	325	320	315	300	285
Club 50 + (wks)	470(2)					

Exam Preparation Courses

	4 wks	8 wks	10 wks	12 wks
TOEFL/TOEIC/IELTS	1280	2560		3780
Cambridge Exam (24)			2700	3120
Cambridge Exam (30)			3200	3780

English for Specific Purposes

English for Teaching - TKT (wks)	1280(4)
----------------------------------	---------

Courses for Individuals

Plus Course Supplement: 5 lessons/10 lessons	400/800
Individual lesson:	80

	24 wks	30 wks	36 wks
ISY - International School Year			
24 lessons per wk	5520	6900	7920
30 lessons per wk	6600	8250	9720

Executive Course Prices in AU\$

Examination Fees

PET	AUS\$270
FCE	AUS\$390
CAE	AUS\$395
BEC Vantage	AUS\$400
TKT	AUS\$270

Additional Fees

Registration fee	AUS\$175
Late booking fee (Cambridge Exam)	AUS\$80
Course materials per wk (up to max. of 20 wks)	AUS\$14
Overseas student health cover per month (must cover length of student visa)	AUS\$30
Airport transfers (one way)	AUS\$95

Accommodation

Accommodation placement fee	AUS\$210
-----------------------------	----------

Homestay

Per person, per wk:		
Single room	B&B	AUS\$145
	HB	AUS\$210
Extra night	B&B	AUS\$22
	HB	AUS\$32

Supplements

Christmas	AUS\$25
U18 Full Board	AUS\$75
Special Diets	AUS\$25
Executive	AUS\$25

Student Residences

per person, per wk:	
Single room*	AUS\$260-700

* A range of meal options are available. Please contact LSI Brisbane for details

Hotel

2, 3 and 4 star hotel prices available on request.





Sliema

English in Malta
English Language Academy



LSI Sliema

The LSI-affiliated school English Language Academy is situated about 3 minutes walk from the promenade in Sliema and is within easy reach of restaurants, cafes and shops. It is one of the founder members of the Federation of English Language Teaching Of Malta (FELTOM). Our courses are run throughout the year, for adults, teenagers and even young children. Groups are small and attend to six levels of proficiency. Teacher training courses are available for experienced teachers, aimed specifically at primary/secondary school teachers of English as a second language. We are also licensed for the EU Socrates Programme for Educational Courses. The school is air-conditioned, with reference library and free internet services.

Leisure Programme

Besides our LSI Social/Leisure programme we can also organise excursions on Malta and her sister island Gozo.



General Courses

Standard 20 see p4

- 1 lesson: 45 minutes
- 6/10* students max. per class
- All levels

Intensive 30 see p4

- 1 lesson: 45 minutes
- 6/10* students max. per class
- All levels

Combi Courses

- 30 lessons per week (20 Everyday English + 10 Business/Exam Course)
- 6/10* students max. per Everyday English class, 6 students max. per Business/Exam Course class
- Lower intermediate to Advanced levels

Business English

- 1 lesson: 45 minutes
- 6 students max.
- Lower Intermediate to Advanced levels

English for Specific Purposes (ESP)

- 2/4 students max. per class • All levels
- Starting dates: every day Mon-Fri

- * Courses with 6 participants available. Nov-Mar; Courses with 10 participants available Apr-Oct. Teenager group courses, average ten maximum twelve in July and August.

TOEFL iBT & IELTS Preparation see p8

- Intermediate level
- Individual/Group lessons*

Starting dates: every day Mon-Fri

* Examination Group classes (6 students max.) available with the same fees as the Business English course

TEFL Preparation

- 60 lessons
- 4 week course
- 16 participants max.
- Starting dates: please contact LSI Sliema for details

Cambridge Exam Courses see p8

- Preliminary (PET)
- Business (BEC)

- First Certificate (FCE)
- Advanced (CAE)
- Proficiency (CPE)
- Individual/Group lessons*

Starting dates: every day Mon-Fri.

* Examination Group classes (6 students max.) available with the same fees as the Business English course. Lesson time reduced by 50% if only one student in the class

Executive Courses One-to-One see p31-33

Public Holidays

No instruction on the following dates: Jan 1, Feb 10, Mar 19, 31, Apr 10, May 1, Jun 29, Sep 8, 21, Dec 8, 25

LSI Course Prices in € Prices for tuition only

General Course	1-2 wks	3-4 wks	5-8 wks	9-11 wks	12-15 wks
Prices per week	130	123.50	117	110.50	97.50
Standard 20	175	166.25	157.50	148.75	131.25
Intensive 30					

For prices of other wks please contact LSI Sliema

	1 wk
Combi Courses	200
Business English: 20 lessons/30 lessons	180/245
ESP (class of 2): 20 lessons/30 lessons	200/280
ESP (class of 4): 20 lessons/30 lessons	150/210

TOEFL & IELTS Preparation/Cambridge Exam

15 lessons per week	300
20 lessons per week	380
30 lessons per week	540

Executive Course Prices in € See page 33

Additional Fees

Registration fee	€15
Course materials	€12
Airport transfers (return)	€18

Accommodation Homestay

per person, per night for twin or triple room	
Jan 1 - Jun 30 & Oct 1 - Dec 31:	
FB	€21.50
HB	€18
Single room supplement	€5
Jul 1 - Sep 30:	
FB	€24.50
HB	€21
Single room supplement	€6.50

School Residences

Quad/Triple room	
Double/Single room	
Sharing room	
Accommodation prices will be given on request. Double, triple, or quadruple rooms may only be booked if 2, 3 or 4 people sharing. Sharing room means that clients could be sharing with up to three other people.	

Hotel

2, 3 and 4 star hotel prices available on request.



Paris

French in France
Private Institute of Higher Education
Academy of Paris

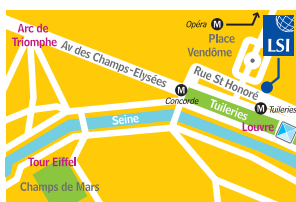


LSI Paris

Situated in a listed, 18th century building at the historical heart of the city, LSI Paris is right by the Louvre and close to the Place Vendome, the Opera and the sophisticated yet bohemian Saint-Honore district. The school is easily accessible by Metro, with Tuileries, Concorde, Opera and Pyramides stations all close by. Computer facilities, a common room and daily newspapers and magazines are provided for student use.

Leisure Programme

The social programme takes advantage of all the myriad attractions that Paris has to offer. Excursions to nearby Versailles and further afield to other parts of France are also possible.



General Courses

Standard 20 see p4

- 12 students max. (average 9)
- All levels

Intensive 30 see p4

- 12 students max. (average 9)
- All levels

Afternoon Course see p4

- 12 students max. per class
- All levels
- Conversational French/ Business French/Exam Preparation

Plus Courses see p4

- All levels

Starting dates for Elementary to Advanced levels: each Monday

Starting dates for students at Beginner level: Jan 5, Feb 2, Mar 2, Apr 6, May 4, Jun 2, Jul 6, Aug 3, Sep 7, Oct 5, Nov 2, Dec 7

Examination Courses:

Diplôme d'Etudes en Langue Française (D.E.L.F.)

- Intensive 30 with DELF preparation in afternoon
- 8 weeks

- Levels A2/B1/B2

Please contact LSI Paris for starting dates

Test D'Evaluation de Français (TEF)

- Afternoon option on LSI Intensive 30
- Minimum of 2 weeks
- Intermediate level or above

Starting dates: each Monday

For examination dates, see p8-9

Diplômes de la Chambre de Commerce et d'Industrie de Paris (CCIP):

Certificat de Français Professionnel (CFP)/ Diplôme Français Medical (DFM)* /

Certificat de Français du Secretariat (CFS) /

Certificat de Français du Tourisme de l'Hotellerie (CFTH)/

Diplôme de Français des Affaires 1^{er} degré (DFA1)*

- Afternoon option on LSI Intensive 30
- 8 weeks

- Level B1 or B2* required

Please contact LSI Paris for starting date

International School Year see p6

- Beginner to Upper Intermediate levels

Starting dates: Jan 5, Feb 2, Mar 2, Apr 6, May 4, Jun 2, Jul 6, Aug 3, Sep 7, Oct 5, Nov 2, Dec 7

Executive Courses

One-to-One

9 Day Compact course see p31-33

Public Holidays

No instruction on the following dates:

Apr 13, May 1, 8, 21, Jun 1, Jul 14, Nov 11
School is closed from Dec 19, 2009 to Jan 3, 2010.

LSI Course Prices in € Prices for tuition only

Course	1 wk	2-3 wks	4-11 wks	12-15 wks	16-19 wks	20+ wks
Standard 20	285	260	235	220	210	200
Intensive 30 / TEF	390	335	310	290	275	265
Afternoon Course	150	130	120	110	105	100

Exam Preparation Courses

DELF (wks)	2480(8)
CCIP (wks)	2480(8)

Courses for Individuals

Plus Course Supplement: 5 lessons/10 lessons	345/690
Individual lesson:	69

ISY – International School Year	24 wks	30 wks	36 wks	48 wks
20 lessons per wk	4560	5700	6480	8640
30 lessons per wk	5880	7350	8640	11520

Executive Course Prices in € See page 33

Examination Fees

DELF A2/B1	€170
DELF B2	€250
TEF Compulsory	€115
TEF Optional	€105

Additional Fees

Registration fee	€65
Text book	€30
Airport transfers (one way)	€80

Accommodation

Accommodation placement fee	€60
-----------------------------	-----

Homestay

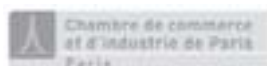
per person, per week:				
Single room	B&B	€189		
Single room	HB	€252		
Single room	HB	€210		
in the suburbs of Paris				

Student Residences

prices on request, subject to availability

Hotel

2, 3 and 4 star hotel prices available on request.





I like the school. The course is very intensive. I am making progress every day. The lessons are 'cool'. Today I can say that German is a beautiful and interesting language.



Anna Popova, Student, Russia



Frankfurt

German in Germany

The city of Frankfurt has the most impressive skyline in Germany, the largest stock market and a remarkable number of museums and other cultural diversions and attractions. Experience the contrast between hi-tech and traditional styles in this fascinating city.



LSI Frankfurt

LSI Frankfurt is located in the pedestrian zone known as the Zeil, in the very heart of the city. It is conveniently situated for the famous shops and department stores, and for attractions such as the Opera, the Paulskirche (the seat of the first German Parliament), the Town Hall with its half-timbered buildings, and the home of Germany's most famous poet and author, Johann Wolfgang von Goethe.



Leisure Programme

Frankfurt, the financial centre of Europe, is a historically rich, multicultural and cosmopolitan city with endless cultural and recreational possibilities. The social programme at LSI Frankfurt is as diverse as the city itself, and day and weekend trips to places such as the Rhine Valley and Heidelberg Castle, are also available.



General Courses

Standard 20 see p4

- 8 students max. (average 4)
- All levels

Intensive 30 see p4

- 8 students max. (average 4)
- All levels

Plus Courses see p4

- All levels
- Starting dates for Elementary to Advanced levels:
Each Monday from Jun 15 until Sep 21
- Starting dates for students at Beginner level: Jun 15, Jul 6, Aug 3, Sep 7
- Courses end Sep 25

Zertifikat Deutsch (ZD)

- 30 lessons per week
- 8 students max. (average 4)

Please contact LSI Frankfurt for starting dates
For examination dates, see p8-9

Executive Courses One-to-One

9 Day Compact course
see p31-33

Public Holidays

No instruction on the following dates:
Apr 10, 13, May 1, 21, Jun 1, 11, Oct 3
School is closed from Dec 19, 2009 to Jan 3, 2010.

LSI Course Prices in € Prices for tuition only

General Course	1 wk	2-3 wks	4-11 wks	12-15 wks
Standard 20	235	225	210	205
Intensive 30	295	280	260	250

Exam Preparation Courses

	8 wks	12 wks
Zertifikat Deutsch (ZD)	2080	3000

Courses for Individuals

Plus Course Supplement: 5 lessons/10 lessons	220/440
Individual lesson:	44

Executive Course Prices in € See page 33

Examination Fees

Zertifikat Deutsch (ZD) €120

Additional Fees

Registration fee €65
Airport transfers (one way) €75

Accommodation

Accommodation placement fee €50

Homestay

per person, per week:
Single room B&B €170
HB €240

Student Residences

prices on request, subject to availability

Hotel

2, 3 and 4 star hotel prices available on request.





Besides competent and enriching lessons, LSI Zürich organises a great leisure program. The teachers are really cool and put across how fresh German can be!



Jan Bajer, student, Czech Republic



Zurich

German in Switzerland



LSI Zürich

Situated in the popular Seefeld district, just 5 minutes from the lake and close to the city centre, LSI Zürich is a perfect departure point for exploring this most varied and refined of cities. The school has 9 classrooms, a modern internet café and a student lounge.

Leisure Programme

Our varied activities include scenic boat trips, school BBQs, Cheese Fondue nights, opera visits, excursions to other Swiss cities and the Alps, as well as sports activities and weekend trips to the surrounding countries of Austria, France, Germany and Italy. LSI Zürich's leisure programme aims to satisfy the interests of all our international students.



General Courses

Standard 20 see p4

- 1 lesson: 45 minutes
- 12 students max. (average 8)
- All levels

Intensive 30 see p4

- 1 lesson: 45 minutes
- 12 students max. (average 8)
- All levels

Afternoon Course see p4

- 1 lesson: 45 minutes
- 12 students max. (average 8)
- Intermediate to Advanced levels
- Conversational German/Business German/Exam Preparation

Plus Courses see p4

- All levels
- Starting dates for Elementary to Advanced levels: each Monday
- Starting dates for students at Beginner level: Jan 5, Feb 2, Mar 2, Apr 6, May 4, Jun 2, Jul 6, Aug 3, Sep 7, Oct 5, Nov 2, Dec 7

International School Year see p6

- Beginner to Intermediate levels
- Starting dates: Jan 5, Feb 2, Mar 2, Apr 6, May 4, Jun 2, Jul 6, Aug 3, Sep 7, Oct 5, Nov 2, Dec 7

Zertifikat Deutsch (ZD)

- 30 lessons per week
- 12 students max. (average 8)

Goethe Zertifikat B2 (GZ)

- 30 lessons per week
- 12 students max. (average 8)

Starting dates: Apr 20, Jun 22, Nov 2
For examination dates, see p8-9

Executive Courses One-to-One 9 Day Compact Course see p31-33

Public Holidays

No instruction on the following dates:
Apr 10, 13, May 1, 21, Jun 1, Aug 1
School is closed from Dec 19, 2009 to Jan 3, 2010.

LSI Course Prices in CHF Prices for tuition only

General Course	1 wk	2-3 wks	4-11 wks	12-15 wks	16-19 wks	20+ wks
Standard 20	410	370	350	330	310	295
Intensive 30	530	500	480	465	440	420
Afternoon Course	205	185	175	165	155	150

Exam Preparation Courses

Zertifikat Deutsch (wks)	5580(12)
Goethe Zertifikat B2 (wks)	5580(12)

Courses for Individuals

Plus Course Supplement: 5 lessons/10 lessons	425/850
Individual lesson:	85

ISY – International School Year	24 wks	30 wks	36 wks	48 wks
20 lessons per wk	6120	7650	9000	11760
30 lessons per wk	8880	11100	13140	17040

Executive Course Prices in CHF See page 33

Examination Fees

Zertifikat Deutsch (ZD)	CHF270
Goethe Zertifikat B2	CHF310

Additional Fees

Registration fee	CHF100
Course materials	CHF14
Airport transfers (one way)	CHF150

Accommodation

Accommodation placement fee	CHF100
-----------------------------	--------

Homestay

Per person, per week:		
Single room	B&B	CHF240
	HB	CHF360

Student Residences

prices on request, subject to availability

Hotel

2, 3 and 4 star hotel prices available on request.



LSI Executive Courses



One-to-One

- 20, 30, 40, or 50 individual lessons per week
- Beginner to Advanced levels
- 1 lesson: 45 minutes (in the USA 50 minutes)
- Courses begin: every Monday

Individual tuition is the fastest way to learn a language. Whether you need general or specialised language, each course is designed for your needs and adapted to your rate of progress. It is the perfect option if you have specific targets or limited time. It is particularly convenient for professionals and executives preparing for a trip abroad, or negotiations and presentations in a foreign language. Our reputation for adaptability and flexibility means that your trainers respond to any further requirements you may have.

9 Day Compact Course

- 82 or 92 individual lessons
- 9 consecutive days
- Courses begin: every Saturday

For people with special aims which must be met in a short space of time. Requiring just one week away from the office, this course is ideal for busy professionals and executives who need to prepare for presentations and meetings abroad. The course includes lunch with your teacher, giving you the opportunity to work on your social language - also vital in a business situation.

LSI has over 40 years' experience in professional training and specialised language courses. We offer a wide range of courses. We will design a programme to meet your needs, whatever they are. Our language trainers use the latest teaching methods and are skilled at assessing your needs. They will establish with you a detailed course plan to help you achieve your objectives.

Mini Group

- 20, 30 or 40 lessons per week
- Participants: maximum 5
- Minimum age: 21 years
- Intermediate to Advanced levels
- Course length: 1-4 weeks
- 1 lesson: 45 minutes (in the USA 50 minutes)
- Courses begin: every Monday

This course combines general grammar and skills development with an in-depth focus on the language of business. The small, intensive group provides the ideal opportunity to practise negotiation, presentation and meeting skills in a realistic situation.

Intercultural awareness is important in global business and communication. The international mix of our courses and experience of our teachers provides the perfect forum in which to gain this valuable knowledge.

Mini Group Plus One-to-One

Designed to complement the Mini Group, Plus courses are individual lessons flexibly arranged when you need extra help on a specific area or want to increase your rate of progress.

Sample course plans:

- 40 Mini Group lessons + 5 One-to-One lessons per week
- 30 Mini Group lessons + 10 One-to-One lessons per week
- 20 Mini Group lessons + 20 One-to-One lessons per week
- 2 weeks Mini Group (40 lessons per week) + 1 week One-to-One (40 lessons per week)



We had a lot of good in-depth discussions in class and I thoroughly enjoyed my stay.

Anita Rasmussen, Attorney, Denmark



The goals set with my LSI teacher have been entirely achieved: a tailor-made individual course with emphasis on speaking and pronunciation and useful business vocabulary and idioms.

Olivier Kaeser, UBS Business Banking, Swiss-French



Executive Centres

LSI Executive Centres - Besides the LSI executive centre in London Central, other LSI language centres offer the following selection of executive courses:



London Central

Located in the very heart of London, the Centre is situated on the top floor of our central London school.

A dedicated area is provided for executive clients to study and socialise in a calm and quiet environment. The centre is equipped with computers for client use, and complimentary tea, coffee and daily newspapers are provided. On arrival all clients receive a portfolio folder containing key business vocabulary and information on local attractions, amenities and leisure activities.

An exciting programme of social activities is organised especially for our executive clients, including theatre trips, restaurant evenings, guided walks, museum visits, and a weekly cheese and wine party. These activities help our clients to make the most of their time in London, and provide an excellent opportunity to practise English and meet like-minded professionals.

The Executive Centre is open on public holidays.

London Central – England see p14

- One-to-One
- 9 Day Compact Course
- Mini Group 20/30/40
- Mini Group Plus

London Hampstead – England see p15

- One-to-One

Brighton – England see p16

- One-to-One
- 9 Day Compact Course

Cambridge – England see p17

- One-to-One
- 9 Day Compact Course

San Diego – USA see p18

- One-to-One
- 9 Day Compact Course
- Mini Group 20 (seasonal)
- Mini Group Plus

San Francisco/Berkeley – USA see p19

- One-to-One
- 9 Day Compact Course
- Mini Group 30 (seasonal)
- Mini Group Plus

New York – USA see p20

- One-to-One
- Mini Group 20
- Mini Group Plus

Boston – USA see p21

- One-to-One
- 9 Day Compact Course
- Mini Group 20 (seasonal)
- Mini Group Plus

Toronto – Canada see p22

- One-to-One
- 9 Day Compact Course
- Mini Group 30
- Mini Group Plus

Vancouver – Canada see p23

- One-to-One
- 9 Day Compact Course
- Mini Group 30
- Mini Group Plus

Auckland – New Zealand see p24

- One-to-One
- Mini Group 30
- Mini Group Plus

Christchurch – New Zealand see p25

- One-to-One

Brisbane – Australia see p26

- One-to-One

Sliema – Malta see p27

- One-to-One

Paris – France see p28

- One-to-One
- 9 Day Compact Course

Frankfurt – Germany see p29

- One-to-One
- 9 Day Compact Course

Zürich – Switzerland see p30

- One-to-One
- 9 Day Compact Course

SOME OF OUR CLIENTS

FINANCIAL

American Express
Credit Suisse
Deutsche Bank
Goldman Sachs
JP Morgan Chase
Lloyds TSB
Merril Lynch

AUTOMOTIVE – ENGINEERING

Daimler Chrysler
Mercedes Benz
Mitsubishi
Toyota

CONSULTANCY

Cap Gemini Ernst & Young
KPMG

PHARMS AND HEALTHCARE

Aventis
Pfizer
Johnson & Johnson
Bayer

TECHNOLOGY

Bosch
Casio
Dell
Ericsson
Hewlett-Packard
Logica
Samsung
Siemens
SMEG

TRANSPORT

Deutsche Bahn
Lufthansa Cargo

OIL

Shell

FOODS

Cadbury
Schweppes
Cadbury Trebor
Bassett
Coca Cola
Danone
Heineken
Nestlé
Unilever

TELECOMMS

British Telecom
Cable and Wireless
Nortel Networks
Orange
Communications

MEDIA

BBC TV
EMI Records
Reuters

RETAIL

H&M -
Hennes & Mauritz
Gucci

ENTERTAINMENT

Kookaï
The Walt Disney Company



The combination of the Mini Group and One-to-One course to improve my English was very useful. We also had a very good atmosphere and the teachers were very flexible.



Jens-Michael Gebhardt, Engineer BOSCH, Germany



LSI Executive Courses (prices for tuition only)

One-to-One Courses	5 lessons per week	10 lessons per week	20 lessons per week	30 lessons per week	40 lessons per week	50 lessons per week
London Central, London Hampstead*, Brighton, Cambridge	£215	£430	£860	£1290	£1720	£2150
SF/Berkeley, San Diego, Boston	US\$360	US\$720	US\$1440	US\$2160	US\$2880	US\$3600
New York	US\$385	US\$770	US\$1540	US\$2310	US\$3080	
Toronto, Vancouver	CD\$360	CD\$720	CD\$1440	CD\$2160	CD\$2880	CD\$3600
Brisbane	AU\$400	AU\$800	AU\$1600	AU\$2400		
Auckland, Christchurch	NZ\$400	NZ\$800	NZ\$1600	NZ\$2400		
Sliema (General/Specialised)			€340/380	€480/540		
Paris	€345	€690	€1380	€2070	€2760	€3450
Frankfurt	€220	€440	€880	€1320	€1760	€2200
Zürich	CHF425	CHF850	CHF1700	CHF2550	CHF3400	CHF4250
Mini Group (Course Prices per week)	lessons per week	1 wk	2 wks	3 wks	4+ wks	
London Central	20	£460	£440	£420	£400	
	30	£620	£600	£580	£560	
	40	£780	£760	£740	£720	
SF/Berkeley**	30	US\$1175	US\$1045	US\$1000	US\$980	
San Diego**	20	US\$880	US\$785	US\$750	US\$735	
Boston**	20	US\$880	US\$785	US\$750	US\$735	
New York	20	US\$1030	US\$915	US\$875	US\$855	
Toronto, Vancouver	30	CD\$1075	CD\$945	CD\$900	CD\$880	
Auckland	30	NZ\$1000	NZ\$925	NZ\$895	NZ\$880	
9 Day Compact Course		82 lessons	92 lessons			
London Central, Brighton, Cambridge		£3525	£3955			
SF/Berkeley, San Diego, Boston		US\$5900	US\$6620			
Toronto, Vancouver		CD\$5900	CD\$6620			
Paris		€5655	€6345			
Frankfurt		€3525	€3860			
Zürich		CHF6970	CHF7820			

* 40/50 lessons not available.

**Courses start each Monday between dates shown. In cases where a public holiday falls on a Monday, the course will start on the Tuesday.

SF/Berkeley: Jan 5, Apr 6, Jul 1- Aug 31, Oct 5

Boston: Jun 1 - Sep 28

San Diego: Mar 2 - May 26, Sep 8 - Nov 9

Registration Fees

London Central, London Hampstead, Brighton, Cambridge	£60
SF/Berkeley, San Diego, Boston, New York	US\$120
Toronto, Vancouver	CD\$120
Brisbane	AU\$175
Auckland, Christchurch	NZ\$120
Sliema	€15
Paris	€65
Frankfurt	€65
Zürich	CHF100

Accommodation

Placement Fees

Paris	€60
Frankfurt	€50
Zürich	CHF100
Brisbane	AU\$210
Auckland, Christchurch	NZ\$200
Toronto, Vancouver	CD\$150

Homestay

Single room per person (all prices are per week unless otherwise stated):

UK

London Central, London Hampstead		
Zone 2	B&B	£140
	HB	£165
Zone 3	B&B	£130
	HB	£155
Zones 4-6	B&B	£120
	HB	£145
Executive suppl.		£25
Private bathroom suppl.		£75
Brighton	B&B	£105
	HB	£125
Executive suppl.		£40
Cambridge	B&B	£115
	HB	£135
Executive suppl.		£75
UK summer suppl. Jun 28 - Aug 30		£15

USA

SF/Berkeley, San Diego & Boston	B&B	US\$185
	HB	US\$250
Executive suppl.		US\$80
New York (Manhattan)	B&B	US\$485
(outside Manhattan)	B&B	US\$260
	HB	US\$325
Executive suppl. (in Manhattan)		US\$180
USA summer suppl. Jun 28 - Aug 30		US\$30

Other Locations

Toronto & Vancouver	B&B	CD\$185
	HB	CD\$215
Executive suppl.		CD\$60
Summer suppl. Jun 28 - Aug 30		CD\$20
Brisbane	B&B	AU\$145
	HB	AU\$210
Executive suppl.		AU\$25
Auckland & Christchurch	B&B	NZ\$165
	HB	NZ\$200
Executive suppl.		NZ\$70
Paris	B&B	€189
	HB	€252
Frankfurt	B&B	€170
	HB	€240
Zürich	B&B	CHF240
	HB	CHF360
Sliema	HB	€23
(prices per night) FB		€26.50
Summer suppl. Jul 1- Sep 30		€4.50

Hotel

2, 3 and 4 star hotel prices available on request.



English for Young Learners



LSI Toronto Young Learners' Programme (13-17 years)

Based at our fun, caring and friendly school in Toronto, the LSI Toronto Young Learners' Programme provides young students with the opportunity to practice their English with peers from around the world. Formal English classes take place every weekday morning followed by a wide range of afternoon excursions and activities.

- 20 lessons per week
- Elementary to Advanced levels
- Afternoon activities/excursions
- Optional: Twin room, homestay accommodation (full board)
- Full day excursions including Niagara Falls and Canada's Wonderland

Starting Dates (for individuals)

Every Monday from Jul 6 to Aug 10
(Course ends Aug 14).
Groups available all year round.

Prices

Registration fee:	CD\$120
Course only, per week:	CD\$525
Course plus twin room, homestay accommodation (full board), per week:	CD\$805
For prices with residence accommodation please contact the school. One group leader can accompany each group of 15 students for free.	
Upon request:	
Insurance, per week:	CD\$25
Airport transfers (one way)	CD\$100
Custodianship service available if requested by Canadian Embassy:	CD\$150

LSI London Young Learners' Programme (13-17 years)

This course is based in Hampstead Village – a quiet, upmarket, leafy suburb in the cosmopolitan city of London. The programme includes English tuition and an exciting social programme. You will get the chance to practise your English with other young people from around the globe. Stimulating lessons both in and outside the classroom will bring your English alive. During half day and full day excursions you will also enjoy the opportunity to explore this vibrant, capital city. It will be a summer experience you will always remember!

- 20 lessons per week (9am to 1pm)
- Elementary to Advanced levels
- Afternoon activities/Saturday excursions
- Optional: Full board host family accommodation in single/twin* room homestay OR residential dormitory accommodation for accompanied students only

* For students booking together with same arrival and departure dates

Starting Dates

Every Monday from Jul 6 to Aug 17
(Course ends Aug 22).

Prices including insurance

Registration fee:	UK£60
Course only, per week:	UK£330
Course plus full board homestay accommodation per week:	
Single room	UK£540
Twin room*	UK£525
Course plus residential accommodation (full board), per week:	
Single room	UK£665
Twin room*	UK£635

One group leader can accompany each group of 15 students for free. Airport transfers and Meet & Greet Service available on request.

Parent and child study options also available. Why not take the opportunity to study on an LSI course at the same time as your child? Please contact LSI Hampstead for more details.

Sample week on the LSI Toronto Young Learners' Programme

Sun	Mon	Tues	Wed	Thurs	Fri	Sat
Arrival day or free time	Welcome and placement test	Grammar, vocabulary skills	Grammar, vocabulary skills	Grammar, vocabulary skills	Grammar, vocabulary skills	Trip to Niagara Falls
Break Time						
Induction and first lesson	Project work	Project work	Project work	Project work	Project work	
Lunch Time						
CN Tower	Games and sports afternoon	Casa Loma visit	Art Gallery visit	Games and sports afternoon		
Boat cruise	Film night	Festival at Harbourfront	Bluejays Baseball game	All ages dance party		Free time

Sample week on the LSI London Young Learners' Programme

Sun	Mon	Tues	Wed	Thurs	Fri	Sat
Arrival day or free time	Welcome and placement test	Grammar, vocabulary skills, pronunciation	Grammar, vocabulary skills, pronunciation	Grammar, vocabulary skills, pronunciation	Grammar, vocabulary skills, pronunciation	Departure Day or Full Day Trip to Greenwich /River Thames Cruise
Break Time						
Project Work & Skills Development	Project Work & Skills Development	Project Work & Skills Development	Project Work & Skills Development	Project Work & Skills Development	Project Work & Skills Development	
Packed Lunch						
Hampstead Walk	The National Gallery	St Paul's Cathedral, Millennium Bridge & The South Bank	Shakespeare's Globe Theatre	Certificates & Leaving Party Camden Market, shopping trip		
Dinner with Host Family						



Thanks to LSI, my English improved so much because we were talking English all the time. All the teachers were kind and friendly.



Aska Itakura, Japan

LSI Family Course



LSI San Diego Young Learners' Programme (13-17 years)

Based at our San Diego centre in sunny Southern California, the programme gives younger students the opportunity to study in an international environment with other young students from the world over. Morning English lessons followed by a variety of activities and excursions in the afternoon make up the core of the programme. Evening and weekend events round out the experience. Come for a summer of sand and fun in this beautiful beach city.

- 20 lessons per week
- Elementary to Advanced levels
- Afternoon activities/weekend excursions
- Optional: Full board accommodation (shared room, homestay/residential dormitory accommodation)

Starting Dates

Every Monday* from Jun 29 to Aug 10 (Course ends Aug 14).

Prices

Registration fee: US\$120

Course only, per week US\$525

Course plus shared room homestay accommodation (full board), per week US\$805

Course plus shared room residential dormitory accommodation (full board), per week US\$1075

One group leader can accompany each group of 15 students for free.

Upon request:

Insurance, per week US\$25
Airport transfers (one way) US\$80

* Except for July 27. The course will start on Tuesday July 28 instead.

The LSI Family Course is designed for parents who wish to combine a family holiday with their English studies.

While parents and older children follow the course of their choice at LSI Brighton, younger children can attend the Dorothy Stringer School Summer Camp, just 30 minutes by bus from our school. We offer a juniors' programme (5-12) and a teenagers' programme (13-15).

The camp has a fantastic range of activities, including arts and crafts, drama, sports, dancing and indoor games. The facilities are excellent and include a large sports hall, an indoor swimming pool, extensive playing fields and tennis courts. Excursions are also included in the teenager programme.

A daily hot lunch is included in the price. For children who do not have a high level of spoken English, English lessons are provided.

Full-time

(Monday-Friday, 9.00-16.00) includes English lessons (3 hours per day)

Prices per week- Juniors/Teenagers

UK£ 220/£ 250 per child
UK£ 275/£ 305 per child including daily supervised transport from and to homestay (within a 2 mile radius of the camp).

Accommodation options for families in Brighton during the summer are limited and we advise booking early to ensure availability. Hotel accommodation is highly recommended. Host family and flat accommodation are very limited and available upon request. Please contact LSI Brighton for more information.

The LSI Family Course is available at LSI Brighton from Jul 27-Aug 21 2009 (juniors)/Jun 29-Aug 22 2009 (teenagers).

Enrolments only accepted for children who have a parent/guardian enrolled on a course at LSI Brighton.

Sample week on the LSI San Diego Young Learners' Programme

Sun	Mon	Tues	Wed	Thurs	Fri	Sat
Arrival day or free time	Welcome and placement test	Grammar, vocabulary skills	Grammar, vocabulary skills	Grammar, vocabulary skills	Grammar, vocabulary skills	Trip to Balboa Park
Break Time						
	Induction and first lesson	Project work	Project work	Project work	Project work	
Lunch Time						
Downtown Tour	Balboa Park museums	Games and sports afternoon	Old Town State Park	Beach volleyball		
Harbour cruise	Padres Baseball game	Film night	All-ages club	Beach party	Free time	



www.lsi.edu

OVER
40
YEARS
EXPERIENCE

Learn and live the language

Language Studies International

ENGLAND

LSI London Central

19-21, Ridgmount Street
London WC1E 7AH
Tel. +44 (0)207 467 6500
Fax. +44 (0)207 323 1736
E-mail: lon@LSI.edu

LSI London Hampstead

13, Lyndhurst Terrace
London NW3 5QA
Tel. +44 (0)207 794 8111
Fax. +44 (0)207 431 5681
E-mail: ham@LSI.edu

LSI Brighton

13, Ventnor Villas
Brighton BN3 3DD
Tel. +44 (0)1273 722 060
Fax. +44 (0)1273 746 341
E-mail: bri@LSI.edu

LSI Cambridge

41, Tenison Road
Cambridge CB1 2DG
Tel. +44 (0)1223 361 783
Fax. +44 (0)1223 467 725
E-mail: cam@LSI.edu

USA

LSI Berkeley

2015 Center Street
Berkeley CA 94704
Tel. +1 510 841 4695
Fax. +1 510 841 3015
E-mail: ber@LSI.edu

LSI San Diego

1706 5th Avenue
San Diego CA 92101
Tel. +1 619 234 2881
Fax. +1 619 234 2883
E-mail: san@LSI.edu

LSI Boston

105 Beach Street
Boston MA 02111
Tel. +1 617 542-3600
Fax. +1 617 542-1790
E-mail: bos@LSI.edu

LSI New York

**Metropolitan College
of New York**
431 Canal Street, 12th Floor
New York, NY 10013
Tel. +1 212 965-9940
Fax. +1 212 965-1268
E-mail: nyc@LSI.edu

CANADA

LSI Vancouver

Suite 101, 808 Nelson Street
Vancouver, B.C. V6Z 2H2
Tel. +1 604 683 7654
Fax. +1 604 683 7554
E-mail: van@LSI.edu

LSI Toronto

1055 Yonge Street
Suite #210
Toronto, ON M4W 2L2
Tel. +1 416 928 6888
Fax. +1 416 928 3388
E-mail: tor@LSI.edu

NEW ZEALAND

LSI Auckland

Level 1, 10-12, Scotia Place
Auckland City
Tel. +64 (0)9 303 3097
Fax. +64 (0)9 303 3497
E-mail: auc@LSI.edu

LSI Christchurch

Floor 2,
114, Peterborough Street
Christchurch
Tel. +64 (0) 3 377 7337
Fax. +64 (0) 3 377 7338
E-mail: chc@LSI.edu

AUSTRALIA

LSI Brisbane

93, Edward Street
Brisbane QLD 4001
Tel. +61 (0)7 3221 6977
Fax. +61 (0)7 3221 6861
E-mail: bne@LSI.edu

MALTA

English Language Academy

9 Tower Lane
Sliema SLM 15
Tel. +356 2134 6264
Fax. +356 2133 9656
E-mail: info@elamalta.com
LSI on the Internet:
http://www.LSI.edu

FRANCE

LSI Paris

350, Rue St Honoré
75001 Paris
Tel. +33 (0)1 4260 5370
Fax. +33 (0)1 4261 4136
E-mail: par@LSI.edu

GERMANY

LSI Frankfurt

Zeil 107
60313 Frankfurt
Tel. +49 (0)69 20309
Fax. +49 (0)69 296 339
E-mail: fra@LSI.edu

SWITZERLAND

LSI Zürich

Kreuzstrasse 36
8008 Zürich
Tel. +41 (0)44 251 5889
Fax. +41 (0)44 251 5805
E-mail: zur@LSI.edu

BELGIUM

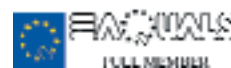
Language Studies International

Rue du Taciturne, 50
1000 Bruxelles
Tel. +32 (0)2 217 2373
Fax. +32 (0)2 217 6451
E-mail: info@lsi-be.net

E01 local 2009



Language Studies
International
© Copyright 2008/09 Language
Studies International Ltd.



Layout & Typesetting: ICG (www.icgonline.co.uk)
Printed by: MZA-Medien-Zentrum Aichelberg